

SIDNEY COMMUNITY SCHOOLS
“We hold tomorrow in our hands.”

Board of Directors

Heidi Lowthorp – President
Alisha Ettleman – Vice-President
Erika Graham
Larry Holt
Michael Daly
Janet Lemrick – Board Secretary
Jennifer Maher – Board Treasurer

Gregg Cruickshank
Superintendent
2754 Knox Road; Box 609
Sidney, IA 51652
712-374-2141
712-374-2013 FAX
gcruckshank@sidney.k12.ia.us

Linda Spencer
Pk-6 Principal/Curriculum Dir.
1002 Illinois; Box 609
Sidney, IA 51652
712-374-2647
712-374-2648 FAX
lspencer@sidney.k12.ia.us

Bill Huntington
7-12 Principal
2754 Knox Road; Box 609
Sidney, IA 51652
712-374-2141
712-374-2013 FAX
bhuntington@sidney.k12.ia.us

Board of Directors Public Hearing
Instructional Support Program/Levy
Monday, September 21, 2015 – 7:30 p.m.
Boardroom – 2754 Knox Road

1. Call meeting to order and determine a quorum
2. Hearing and public comment – Instructional Support Program/Levy Resolution of Intent
3. Adjournment

Board of Directors Meeting Agenda
Monday, September 21, 2015
Upon conclusion of the public hearing
Boardroom – 2754 Knox Road

1. Call meeting to order and determine a quorum
2. Recognition of guests and public comment – the Board may allow up to 5 minutes for citizens to discuss school matters with the Board. More time may be granted at the discretion of the Board. Discussing personnel matters relating to performance and evaluation are prohibited by the Board. Such matters shall be appropriately considered by the administration and resolved according to Board Policy and Iowa Administrative Code.
3. Approve agenda
4. Approve minutes – August regular meeting
5. Consider bills to be paid
6. Financials
7. Recognition of Board service
8. Adjourn retiring Board
Reorganization of the Board
 1. Call the organizational meeting of the new Board to order and determine a quorum by the Board Secretary
 2. Administer Oath of Office to the newly elected Board member
 3. Approve Abstract of Votes – September 8 election
 4. Election of President
 5. Election of Vice-President
 6. Administer Oath of Office to the new officers
 7. Determine day, time and place for regular meetings
8. Reports
Elementary Principal/Curriculum Director
Junior High-High School Principal
Superintendent
9. Discussion/action
 - a. Board priorities/future considerations
 - b. Apex Center Consortium
 - c. Corner Conference athletic participation 2016/17
10. Action
 - a. Resignation of personnel
 - b. Employment of personnel
 - c. Level 1 and 2 child abuse investigators
11. Board comment
12. Celebrations
13. Adjournment

Annotated agenda

- **Instructional Support Levy/Program – enclosed** is a copy of the Resolution of Intent which was approved at the August meeting and the proposed Resolution of Participation which will be on the October agenda. If the Resolution of Participation is approved by the Board in October, the ISL will be reauthorized for a period from July 1, 2016 through June 30, 2021. It generates \$165,000 - \$175,000 of funding and budget authority per year. It is funded with income surtax and property tax. The weighting for 2015/16 is 85% income surtax and 15% property tax.
- **Board recognition** – Brad Johnson for four years of dedicated service to the students and patrons of the district! A plaque from IASB has been ordered and will be presented to Brad at a later date.

Reorganization of the Board

- Board Secretary Janet Lemrick will call the meeting to order and roll call to determine a quorum.
- Janet will administer the oath of office to Director Mike Daly.
- Approve the Abstract of Votes from the September 8 election. **Enclosed and motion needed.**
- Election of the Board President. Each nomination must have a second. There must be a motion and second that nominations cease. If more than one nomination, there will be a secret ballot. If there is only one nomination, then that person can assume office by Board acclimation.
- Election of the Board Vice-President will follow the same process as for President.
- Janet will administer the oath of office to the President and Vice-President.
- Determine a day, time and place(s) for regular monthly meetings. South Page meets on the second Monday.

Elementary Principal/Curriculum Director – will be emailed and hard copies shared at the meeting.

Junior High/High School Principal – will be emailed and hard copies shared at the meeting.

Superintendent

- Iowa Association of School Boards (IASB) orientation workshop is Tuesday, October 6 at Glenwood from 5:30 – 8:30 p.m. This training is for new and experienced board members. **Information enclosed.**
- Rural School Advocates of Iowa annual meeting is Wednesday, October 7 from 5:30 – 7:30 p.m. at Ankeny. I will be attending and the Board is invited to attend. There is room for six additional passengers. Board members need to be registered as there is a meal – let me know. **Proposed legislative priorities for adoption enclosed.**
- IASB annual convention is November 18 and 19 at Des Moines with a Board President workshop on November 20. Board members may attend one day or multiple days. **Information enclosed.**
- **Enclosed** - radon testing and training program information from the Energy Association of Iowa Schools. The preschool was tested during an accreditation visit a few years ago and had an elevated level. The district did mitigation at the elementary. The \$1500 fee can be paid for from State Penny or PPEL.
- **Enclosed** – no ejection report for the 2014/15 athletic season from the Iowa High School Athletic Association.
- **Enclosed** – projections for State Penny revenue. This year's estimate is \$273,048.97. Last year's was \$272,886.12. **Also, enclosed** information from Matt Gillaspie at Piper/Jaffray.

Discussion/action

Board Priorities – listed here and posted in the Board room

- Advocate success for all students.
- Build relationships with neighboring districts to strengthen student opportunities for learning.
- Promote school/family partnerships.
- Collaborate with public and private entities to promote educational opportunities and economic growth in Fremont County.
- Foster a climate of cooperation collaboration, and excellence throughout the school community.
- Time for discussion, possible adoption, or table for further consideration.

Future considerations

- The coming months either during regular meetings or at work sessions you may want to have discussions concerning programming, staffing, evolving partnerships, facilities, and trends that affect financial capacity and viability. What information would you like to have and what do you want to discuss with each other and with the community?
1. Programs and opportunities continue to increase at the Elementary and JH/HS.
 2. Partnerships continue to be solid but also evolve year to year.
 3. Enrollment has significantly increased this year. Certified enrollment numbers will be shared at the October meeting.
 4. Regarding facilities
 - *Attendance enters are in good shape. The old Ag shop is adequately serving multiple purposes and seems suitable for the Ag/Auto programs.
 - *The football field, track, and elementary gym are serving their purpose but also showing their age.
 - *State Penny and PPEL generate about \$315,000 a year. A significant amount is purposed for technology. The laptop lease is \$95,000 a year. A voted PPEL could generate an additional \$170,000 a year. Expenditures from State Penny and PPEL for the previous five years will be shared at the October meeting.
 - *The additional maximum taxing rate on a voted PPEL is 1.34. The Board approved PPEL is .33. The district has two payments left on the JH/HS debt. The payment due June 1, 2016 is \$220,170.00 and the payment due June 1, 2017 is \$260,865.
 5. General Fund budget authority is over \$1,200,000 and the cash balance is over \$400,000. Funding is trending towards categorical with restricted use (STEM, Early Literacy, Teacher Leadership and Compensation) as opposed to increased allowable growth/supplemental state aid - sources of funding that allow for more local spending discretion.

Apex Center Consortium

- **Enclosed** is the cover page and the cost break out for per child services.
- The Apex Center is located at the Glenwood grades 3 – 5 attendance center and serves Level III Special Education students, with a focus on addressing behaviors.
- The district has one student attending. Students from several districts attend.
- New state regulations now require programs such as Apex to break out instructional costs, facility rent, and if the district chooses to charge, a per student tuition fee. Previously the costs were all rolled into instruction.

- The instructional costs are paid for from Special Education, the facility rent can be paid for from PPEL or State Penny. The yearly \$65 per child fee must be paid for from General.
- **Motion needed to** approve the district participation in the Apex Consortium.

Corner Conference Athletic Participation 2016/17

- The conference requires each school to declare team sport participation which requires extensive scheduling (volleyball, girls basketball, boys basketball, softball, and baseball). Football is district scheduling. No intent of participation is required for cross country, wrestling, track, and golf.
- **Motion needed** to approve participation.

Action

Resignation of personnel – letter enclosed

- Erik Grudle, Assistant HS Football Coach. **Motion to approve.**

Employment of personnel

- Dustin Sheldon, Assistant HS Football Coach. **Motion to approve.**

Level 1 and 2 child abuse investigators

- This is a yearly appointment.
- Co-level 1 investigators – Bill Huntington and Linda Spencer.
- Co-level 2 investigators – Sidney Police and the Fremont County Sheriff.

Board Comment

Celebrations

Adjournment

RESOLUTION OF INTENT

Director _____ introduced and caused to be read the Resolution hereinafter set out and moved its adoption; seconded by Director _____; after due consideration by the Board, the President put the question upon the adoption of said Resolution and, the results of the roll call vote were:

Aye _____
DIRECTORS

Nay _____
DIRECTORS

Whereupon the President declared said Resolution duly adopted as follows:

RESOLUTION

WHEREAS, the Board deems it necessary and desirable to provide additional funding for the Sidney Community School District; and

WHEREAS, in order to consider participating in an Instructional Support Program, the District must hold a public hearing on the question of participation, setting forth its proposal following publication of the notice of the time and place of such hearing; and

WHEREAS, the Board wishes to set forth in a Resolution its proposal specifying the method and amount to be used to fund the Instructional Support Program, the purposes within the general fund for which the Instructional Support funds will be used, and set a date of public hearing, and direct the Board Secretary to publish notice of the time and place of hearing;

NOW, THEREFORE, be it resolved by the Board of Directors of the Sidney Community School District, in the County of Fremont, State of Iowa, as follows:

Section 1: That a public hearing on the question of the Sidney Community School District's participation in the Instructional Support Program is hereby set for September 21, 2015 at 7:30 o'clock p.m. in the Board of Directors Room at 2754 Knox Road, and the Secretary of the Board is hereby authorized to give notice of the time and place of the public hearing by publishing said notice in the Sidney Argus-Herald, not less than ten (10) nor more than twenty (20) days before the date of the public hearing.

Section 2: At the public hearing the Board will announce the date, no longer than 30 days after the hearing, on which it will take action to adopt a resolution to participate in the Instructional Support Program. At the public hearing the following proposition, as may be modified as a result of discussion and input, shall be considered for inclusion in the resolution to participate in the program, to wit:

The Board of Directors of the Sidney Community School District in the County of Fremont, State of Iowa, does hereby resolve to participate in the Instructional

Support Program for a period of five (5) years, to levy annually, as determined by the Board, an instructional support property tax upon the taxable property within the District, commencing with the levy of property taxes for collection in the fiscal year beginning July 1, 2016, and an instructional support income surtax imposed annually for each budget year, the percent of income surtax (not to exceed twenty percent (20%)), to be imposed upon the state individual income tax of each individual income taxpayer resident in the District on December 31, 2016, and each year thereafter.

The funds thus collected, when combined with Instructional Support State Aid shall not exceed ten percent (10%) of the regular program district cost, including the budget adjustment pursuant to Iowa Code §257.14 for any budget year. Instructional Support Program funds may be used for any general fund purpose.

Section 3: That all resolutions or orders or parts thereof in conflict herewith are hereby repealed to the extent of such conflict.

Passed and approved August 17, 2015.

President, Board of Directors

Attest:

Secretary, Board of Directors

RESOLUTION OF PARTICIPATION

Director _____ introduced and caused to be read the Resolution hereinafter set out and moved its adoption; seconded by Director _____; after due consideration by the Board, the President put the question upon the adoption of said Resolution and the results of the roll call vote were:

Aye _____
DIRECTORS

Nay _____
DIRECTORS

Whereupon the President declared said Resolution duly adopted as follows:

RESOLUTION

WHEREAS, the Board deems it necessary and desirable to provide additional funding for the Sidney Community School District generated by participation in our Instructional Support Program; and

WHEREAS, pursuant to duly published notice, the District held a public hearing on the question of participation in such a program; and

WHEREAS, the District wishes to take action to adopt a Resolution to participate in an Instructional Support Program;

NOW, THEREFORE, be it resolved by the Board of Directors of the Sidney Community School District, in the County of Fremont, State of Iowa, as follows:

The Board of Directors of the Sidney Community School District in the County of Fremont, State of Iowa, does hereby resolve to participate in the Instructional Support Program for a period of five (5) years, to levy annually, as determined by the Board, an instructional support property tax upon the taxable property within the District commencing with the levy of property taxes for collection in the fiscal year beginning July 1, 2016, and an instructional support income surtax imposed annually for each budget year, the percent of income surtax (not exceed twenty percent (20%)), to be imposed upon the state individual income tax of each individual income taxpayer resident in the District on December 31, 2016, and each year thereafter.

The funds thus collected, when combined with Instructional Support State Aid shall not exceed ten percent (10%) of the regular program district cost, including the budget adjustment pursuant to Iowa Code § 257.14 for any budget year. Instructional Support Program funds may be used for any general fund purpose.

That all resolutions or orders or parts thereof in conflict herewith be and the same are hereby repealed to the extent of such conflict.

Passed and approved October 19, 2014.

President, Board of Directors

Attest:

Secretary, Board of Directors

STATE OF IOWA
ABSTRACT OF VOTES

Board
Reorganization

Fremont County, Iowa

We, the undersigned Members of the Board of Supervisors and ex-officio County Board of Canvassers for this County, do hereby certify the following to be a true and correct abstract of the votes cast in this County at the 2015 Fremont Co School Election held on the 8th day of September, 2015, as shown by the tally lists returned from the several election precincts.

SIDNEY SCHOOL DIRECTOR AT LARGE

Fremont

Micheal A Daly	Received ninety (90) votes
Alisha Ettleman	Received eighty-three (83) votes
Ericka Graham	Received eighty-two (82) votes
Bradley F Johnson	Received sixty-six (66) votes
<u>WRITE-IN</u>	
Shad Smith	Received thirty-four (34) votes
Candidate Total	Three hundred fifty-five (355) votes
SCATTERING	Fifteen (15) votes
TOTAL	Three hundred seventy (370) votes

We therefore declare:

Micheal A Daly duly elected for the office of SIDNEY SCHOOL DIRECTOR AT LARGE for the term of 4 years.
Alisha Ettleman duly elected for the office of SIDNEY SCHOOL DIRECTOR AT LARGE for the term of 4 years.
Ericka Graham duly elected for the office of SIDNEY SCHOOL DIRECTOR AT LARGE for the term of 4 years.

IN TESTIMONY WHEREOF, we have hereunto set our hands and caused to be affixed the seal of this county by the Clerk of the Board of Supervisors.

Done at the county seat of Fremont County, this 11th day of September, 2015.

Randy Wicky

Chairperson

Earl Anderson

(Seal)

Cara Morgan

Members of the Board
of Supervisors and
ex-officio County
Board of Canvassers

Attest: *Jean Kib*

County Auditor and Clerk of the Board of Supervisors

IASB Board Member Orientation Workshops

Whether you are new to the board or a seasoned veteran, join other education leaders from your area to learn about board service. This is an opportunity for new board members to ask critical questions and for returning board members to brush up on information and think about the best way to hit the ground running this year with their colleagues.

Your board can be a catalyst for improvement in your district, but this stimulating work has to be built on a strong foundation of knowledge and understanding about the roles and responsibilities of an effective board.

- Explore the IASB Standards for Effective School Boards.
- Learn the difference between board and administrative roles and responsibilities.
- Discover strategies to focus the board's attention on student learning.
- Learn the legal and policy responsibilities of the board.
- Pinpoint the important facets of school finance.
- Examine the critical role board members play as advocates for public education.

Register at www.ia-sb.org or call 1-800-795-4272.

Registration for Sept. 29-Nov. 3 workshops is \$75 for IASB members. Walk-ins are welcome for the same fee. The fee includes all materials and a light meal.



Registration for the Nov. 18 workshop, which will be held at the IASB Annual Convention, is \$90 for IASB members. After Nov. 3, the late registration fee is \$120 for IASB members. The fee includes all materials and a buffet lunch.

Superintendent Report

Dates and Locations:

Sept. 29, 6-8:30 p.m. Ft. Dodge
Ft. Dodge Central Office, 104 S. 17th

Sept. 30, 6-8:30 p.m. Denison
Denison High School, 819 N. 16th St.

Oct. 1, 6-8:30 p.m. Knoxville
Knoxville High School, 1811 W. Madison

Oct. 5, 6-8:30 p.m. Creston
Creston Administration Building, 801 N. Elm

Oct. 6, 6-8:30 p.m. Glenwood
Glenwood Central Office, 103 Central St.

Oct. 7, 6-8:30 p.m. Eldora
Eldora-New Providence High School
1800 24th St.

Oct. 8, 6-8:30 p.m. Cedar Rapids
Prairie High School, 401 76th Ave. SW

Oct. 15, 6-8:30 p.m. Mt. Pleasant
Mt. Pleasant High School, 2104 S. Grand Ave.

Oct. 21, 6-8:30 p.m. Oelwein
Oelwein High School, 315 8th Ave. SE

Oct. 22, 6-8:30 p.m. Bettendorf
Bettendorf Administrative Building, 3311 18th St.

Oct. 24, 9-11:30 a.m. Dubuque
Dubuque Administration Building
2300 Chaney Rd.

Oct. 27, 6-8:30 p.m. Mason City
Lincoln Intermediate School
1625 S. Pennsylvania Ave.

Oct. 27, 6-8:30 p.m. Sioux City
Sioux City Administration Office, 627 4th St.

Nov. 3, 6-8:30 p.m. Spencer
Spencer Central Administration Building
23 E. 7th St.

Nov. 18, 9-11:30 a.m. Des Moines
Iowa Events Center, 730 3rd St.

Note: Attendance at this workshop is one step on the path to the new Basics of Boardmanship Certificate and the Better Boardmanship Award.

RSAI Annual Meeting - October 7, 2015

Wednesday, October 7, 2015
5:30-7:30PM (Light dinner will be served)
FFA Enrichment Center (DMACC Campus)
1055 SW Prairie Trail Parkway, Ankeny, Iowa 50023

* Required

School District *

Number of attendees *

Attendee Information *

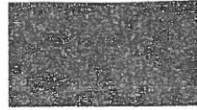
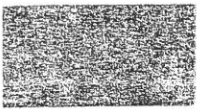
Please list each Attendee Name, Title and Email address below.

Is your district already an RSAI member?

- Yes
- No, but we would like more information about becoming a member.

Submit

Never submit passwords through Google Forms.



- **Transportation Equity:** Supports a mechanism that covers school transportation costs with state and/or local funding that does not unreasonably disadvantage property tax payers in property poor districts or compete with general funds otherwise spent on providing education to students.
 - **Funding and Flexibility for At-risk Students:** Resources for serving at-risk students should be based on need, such as the number/percentage of students eligible for Free and Reduced Price Lunch, rather than enrollment of the district. The current disparity in dropout prevention capacity ceiling, with some districts held to 2.5% and others allowed to access up to 5% of regular program district cost is unfair, arbitrary, and based on old history no longer relevant to supporting student needs. Districts should be given flexibility in determining the expenditure of at-risk resources to support students to graduate college/career ready for success.
 - **State Supplemental Assistance 6%:** RSAI supports a goal to get Iowa's investment in education to the national average. Iowa was \$1,612 per pupil below the USA average level of expenditure in FY 2014. Funding per pupil for the 2015-16 school year was both too low and too late in the 2015 Session. Funding for the 2016-17 school year must be determined ASAP as the 2016 Session convenes and set at an adequate level, no lower than 6%. Per Iowa law, funding for the 2017-18 school year must be set within 30 days of the Governor's budget announcement in the 2015 Session although RSAI would support changing the timing mandate to allow the legislature access to the March REC estimate to set the out year per pupil level. RSAI supports a per pupil increase for 2017-18 no lower than 6%.
 - **Operational Sharing Incentives:** Opportunities to achieve efficiencies, share capacity to operate, and redirect resources to educational programs, should be maintained and expanded to provide additional capacity to school districts to improve educational outcomes for students.
 - **State Penny for School Infrastructure Extension:** RSAI calls on the Iowa Legislature to repeal the sunset of the state penny for school infrastructure.
 - **Standards, Assessment and Technology:** RSAI supports the Iowa Core Content Standards, including an aligned assessment and supports for the technology and bandwidth required to adequately administer the assessment.
6. Information and supports needed? Home school threshold for participation in activities. Other states open enrollment policies. RSAI legislative group responsibilities. Advocacy army building plan.
 7. Select Leadership roles for priorities: Willie and Dennis on transportation, Brian and Nick on Sales Tax extension
 8. Adjourn

Powerful Keynote Addresses • Robust Pre-Convention Offerings • Relevant Education Sessions • Organized Energized Statewide Delegate Assembly • Essential Board Member Orientation • Vital Information and

Wednesday, November 18

The Early Bird and School Finance Workshops offer a lineup of Pre-Convention events that allows you to customize your day of learning. Wednesday's program includes Delegate Assembly, repeat sessions of School Finance 101 & 201, and great Early Bird Workshops designed to engage you in dynamic learning and give you the tools to help you be the best on your local, AEA or college board.

VOTE

IASB Delegate Assembly

9 a.m. - adjournment

Buffet lunch from 11:30 a.m.- 1 p.m.
Make your voice heard! The Delegate Assembly will discuss education issues and set the 2016 Legislative Action Priorities, Beliefs and Resolutions. Nominations for seats on the IASB Board of Directors will also be generated at caucuses.

LEARN

School Finance Workshops

Buffet lunch from 11:30 a.m.-1 p.m. included
Ensuring the financial health and stability of your district is one of your most important roles and a high priority learning need. That's why we continue to offer a full lineup of our School Finance Workshops. Take advantage of our aligned curriculum and flexible schedule with sequential and repeat sessions - allowing you to take a full day of school finance at the level that meets your needs.

School Finance 101 –Basic

9-11:30 a.m. OR 1-3:30 p.m.

If you're a newer board member, you'll value this introduction and overview of basic school finance concepts and terminology. The session will introduce budgeting and funding components in relation to your role on the board.
Facilitator: Shawn Snyder, IASB Finance Support Director

School Finance 201 –Intermediate

9-11:30 a.m. OR 1-3:30 p.m.

When the terms "authorized budget" or "unspent balance" come up in a board meeting, you'll know what they mean after attending this intermediate level workshop. You'll also understand trends using real-world data to help you meet the challenges your district may face. *Facilitator: Gary Sinclair, IASB Financial Planning Services Director*

School Finance 301 –Advanced

1-3:30 p.m.

This advanced level provides a more in-depth analysis of important concepts such as cash/fund balance, spending authority, use of the School Budget Review Committee (SBRC), fiduciary responsibility, understanding your audit report, measures of financial health, and communicating your budget to the public. *Facilitator: Patti Schroeder, IASB Finance Support Director*

Early Bird Workshops

Buffet lunch from 11:30 a.m.- 1 p.m. included
Early Bird Workshops focus on developing your skills and knowledge about how your role as a board member can positively impact your district and all Iowa students.

Board Member Orientation

9-11:30 a.m.

Policy. Advocacy. Finance. Leadership. Community Relations. Learn about your role as a board member in all of these areas and more. Using the Standards for Effective School Boards, the IASB Board Development team will lead this interactive session to help you build strong relationships among your leadership team, improve the culture in the district, and keep the focus on student learning. Both newly elected and veteran board members will find this session valuable. *Facilitators: Mary Jane Vens, Board Development Director; and Harry Heiligenthal, Leadership Development Director*

The Board's Role in Creating a Positive School Culture

9-11:30 a.m.

Board members play a vital role in the culture of their schools. By working collaboratively with administration and staff, they help build effective relationships, establish solid core values and beliefs, achieve high expectations, and develop a positive overall organizational culture.

The interactive workshop focuses on specific actions high-performing board teams take that lead to quality teaching and learning which earns significant results. Join Sam Miller, chief administrator at AEA 267, and Rick Jedlicka, board vice president at Solon Schools, to learn from their success.

New Vision for Advocacy & Building the Better Advocate

Joel Blackwell

1-3:30 p.m.

A successful grassroots effort does not start with a mass of people. It starts with one voice. That is why your voice matters! Join Joel Blackwell, award-winning reporter and editor of the *Miami Herald* and the *Charlotte Observer* and author of *Empowering School Leaders – Personal Political Power for School Board Members and Administrators*. Also known as the Grassroots Guy, Joel guides us through creating a professional grassroots advocacy plan that incorporates effective ways to communicate to legislators and use the media to help shape public policy, even in this tough political climate.

In this engaging session, Joel will inspire new, veteran, and even discouraged board members by illustrating how a single voice plays a powerful role in the legislative process. You will leave this workshop with the knowledge and tools to implement a comprehensive strategy that can be tailored to any district or community.

Networking Opportunities • Dynamic Learning • Invigorating Dialogue • Timely Trends and Issues • Vibrant Exhibit Hall

NETWORK

Member Vendor Social

Wednesday, 3:30 – 5 p.m.

Join other school leaders at the Member-Vendor Social in the Exhibit Hall for networking time and relaxing fun while you check out more than 160 vendors with goods and services for your district. Enjoy free giveaways and delicious refreshments!

Exhibit Hall and Refreshments

Thursday, 9 a.m. – 2 p.m.

Network with and learn from vendors in the Exhibit Hall throughout the day. These organizations offer important services and products to help your schools succeed. Refreshments will be served throughout the day in the Exhibit Hall for your convenience.

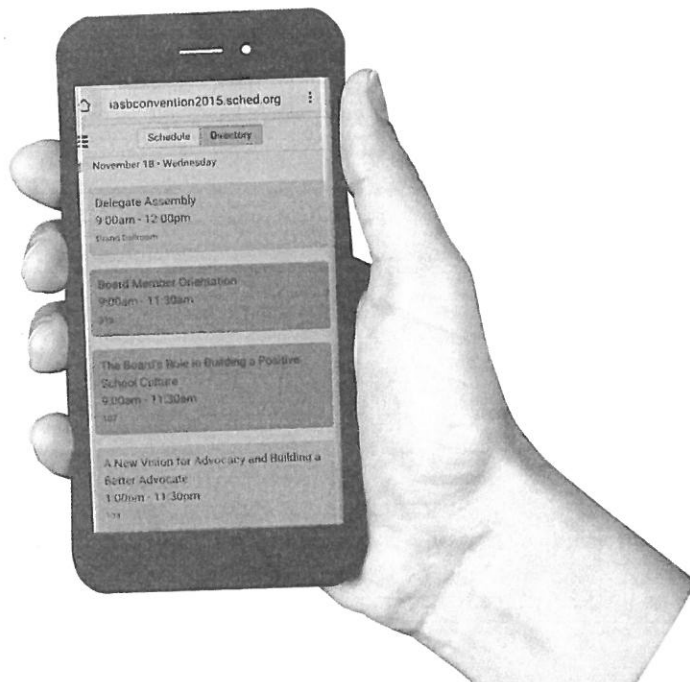
Stop by the IASB and ISJIT booths just outside the Exhibit Hall doors. These booths offer a collection of materials to assist you at the board table. Once again, the ISJIT staff will be handing out their famous chocolate chip cookies!

CONNECT

Mark your calendar!

The full online calendar of events will be available Sept. 25. Log in to plan your days at Convention! www.iasbconvention2015.sched.org

Join the conversation on Twitter at #IASB15



www.iasbconvention2015.sched.org/

Thursday, November 19

Join us on Convention Day for these exciting speakers, education sessions and exhibits by key vendors. Registration opens at 7 a.m. Exhibits open at 9 a.m. Refreshments available all day in the Exhibit Hall.

Opening General Session

8 a.m.

Leadership Under Fire: Lessons from the Battle of Gettysburg

Featured Speaker – Michael McGough

What can today's board/superintendent teams learn about leadership from the Battle of Gettysburg? Surprisingly much. Keynote speaker Michael McGough uses the Gettysburg Campaign as the powerful backdrop for a study of leadership strategies and tactics. The stunning examples of successes and failures in the decisions at this historical battle offer an unmatched opportunity to examine how the leadership of board/ superintendent teams can strengthen—or damage—public education during these challenging times.

Michael McGough is a professor of education at York College in Pennsylvania with nearly 30 years of experience in the K-12 public school classroom. He has published numerous books and articles on education, leadership and the Battle of Gettysburg. This is a keynote speaker you won't want to miss!

Second General Session

Noon – Sit-down lunch included

School District Leadership in Times of Challenge and Change

Featured Speaker – Will Schofield

The challenges facing school districts in the year 2015 often seem overwhelming. However, in the midst of what some deem chaos, school districts have unprecedented opportunities to provide transformational leadership with the potential to dramatically improve our schools. Hear one district's leadership plan which focuses on a "strengths perspective" of students. This traditional Georgia public school district has developed 25 district charter schools and programs of choice, all during the greatest economic downturn since the Great Depression.

In his 27th year of public education, Will Schofield has served as a high school math teacher, assistant principal, principal and superintendent in three school systems. He is currently the superintendent of Hall County Schools where he has been a catalyst for improvements with his strengths-based perspective of children and teachers. He has received numerous awards for his work to positively impact the experience of every learner.

Leaders • Multi-Level School Finance Workshops
 Board Presidents' Workshop • And much more!

entention Offerings • Relevant
 ntial Board Member Ori

Friday, November 20

LEAD

Board Presidents' Workshop
 8 a.m. - Noon

The effective board president must be a good leader, navigator, organizer, communicator and troubleshooter.

You want to do it right. This workshop can help!

Learn and network with other leaders at this interactive workshop designed to provide valuable tools for strategic district leadership. Strengthen your leadership, enhance your skills, and learn from others about what works for them.

Featured Presenter Michael McGough

Our featured presenter is Michael McGough, who will help you explore practical strategies and techniques to enhance personal leadership and discover three critical aspects of your daily life related to successful, long-term, personal leadership and the ability to lead others effectively.

Michael McGough is a professor of education at York College in Pennsylvania with nearly 30 years of experience in the K-12 public school classroom. He has published numerous books and articles on education, leadership and the Battle of Gettysburg.

The workshop also offers practical tools board leaders can use to guide the board's work in budget development. You'll learn from IASB experts in school finance about key financial indicators and how this financial health data can inform budget development.

Anyone is welcome to attend! While custom designed to meet the needs of board presidents, this workshop is open to anyone—board presidents, vice presidents, aspiring board leaders, superintendents, or others.



ip
ur

Early Bird Works

Buffet lunch from 11:30
 Early Bird Workshops for
 knowledge about how to
 positively impact your c

7
3

Board Member Ori
 9-11:30 a.m.

Policy. Advocacy. Finan
 Relations. Learn about
 of these areas and mor
 School Boards, the IAS
 this interactive session
 among your leadership
 district, and keep the f
 elected and veteran bo
 valuable. *Facilitators: M
 Director; and Harry Hei
 Director*

ss

**The Board's Role in
 a Positive School C**
 9-11:30 a.m.

Board members play a
 schools. By working co
 staff, they help buiid ef
 core values and beliefs
 develop a positive over

s
ing

ed
at
e at

The interactive worksh
 performing board team
 and learning which ear
 chief administrator at A
 president at Solon Sch

tion

**New Vision for Advo
 Better Advocate**

Joel Blackwell
 1-3:30 p.m.

A successful grassroots
 of people. It starts with
 matters! Join Joel Blac
 editor of the *Miami Her*
 author of *Empowering
 Power for School Boar*
 Also known as the Gras
 creating a professional
 incorporates effective v
 and use the media to h
 tough political climate.

r

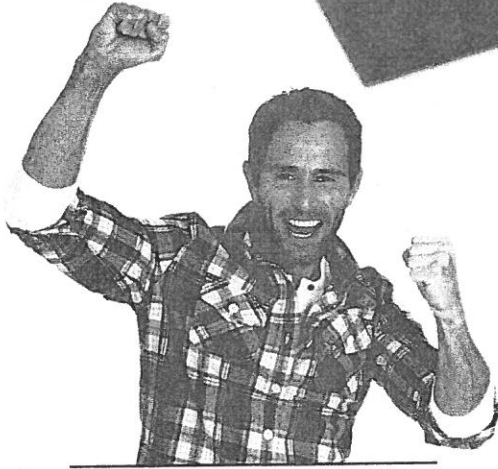
3"
1
30
t the
ir,

In this engaging sessio
 even discouraged boar
 single voice plays a po
 You will leave this work
 implement a comprehe
 any district or commun

SB

\$1500 can come out of PPEL.

School Radon Training & Support System: Yes, We Can Do It Ourselves!



It is already required for Headstart Child Care Centers/4-Year-Old Preschools once every two years. The Iowa Legislature may soon require *all* schools to be tested for radon and/or to have a radon plan on file. Give your school district peace of mind by staying out in front of radon testing requirements with Energy Association of Iowa Schools (EAIS).

Because Iowa schools asked EAIS to help them with radon, EAIS has worked together with the Iowa Department of Education, Iowa Department of Public Health, Healthy Homes™ Education, Inc., Area Education Agencies, and schools to create a system that provides these supports:

- Complete, personalized radon plan for testing, communication and action
- Yearly test data tracking; no mandatory radon tests will be missed
- Panic prevention; test results confidentially secured first by EAIS
- Budget savings; vendor mobilization fees avoided
- Cost distribution; multi-year testing schedule based on number of buildings
- Discounted test kits (additional cost specific to each district)
- Assistance identifying any needed HVAC maintenance and foundation repairs that could improve air quality, learning quality and health; *without unnecessary radon mitigation construction costs and/or additional energy costs*

2015 Iowa Kickoff Workshops
All sessions: 9 a.m. - 2:30 p.m.

September 23
Great Prairie AEA (Ottumwa)

September 30
Green Hills AEA (Avoca)

October 14
Prairie Lakes AEA (Pocahontas)

October 21
Iowa Hall of Pride (Des Moines)
Free tour included!

October 28
Grant Wood AEA (Cedar Rapids)

Contact EAIS director, Julie Weisshaar, with your questions at juliew@energyais.org or 641-202-0949.

To sign up, visit energyais.org and click on the "Register" tab

HOW DOES THE TRAINING & SUPPORT SYSTEM WORK?

--> **Step 1:** Required **Kickoff Workshop for superintendents and facilities managers**. Dates and locations are listed at left. *Participants will walk out with a completed radon testing and communication plan for their school district.* Discounted radon test kits will be available for immediate purchase, if desired.

--> **STEP 2:** School personnel **test their district's buildings** on a locally-determined schedule. The EAIS team will be available throughout to coach and answer questions.

--> **STEP 3:** EAIS compiles **confidential test results data, reports to superintendents, tracks data**, and provides **ongoing support** for one year, including any follow-up actions and/or communication recommended according to Iowa law.

WHAT IS THE COST PER YEAR?

The 2015-2016 introductory cost for the School Radon Training and Support System is just \$1500/year for a school district with an enrollment of less than 1000 students; and \$2500/year for a school district with an enrollment of between 1000 and 3000 students. *EAIS members receive a \$150 discount.* **There is room for only 100 school districts, so register today!**

We are so proud of your school district for being proactive with radon testing that we will be giving away 20 free tickets to the Iowa Hall of Pride during our workshops! Also, the Iowa Hall of Pride is generously providing meeting space and a complimentary tour after the Des Moines workshop. EAIS thanks the Hall and the AEAs for their collaboration.





IOWA HIGH SCHOOL ATHLETIC ASSOCIATION

P.O. BOX 10 • BOONE, IA 50036-0010 • (515) 432-2011 • FAX (515) 432-2961 • www.iahsaa.org

ALAN BESTE, Executive Director • BRETT NANNINGA, Associate Director

TODD THARP, Assistant Director • CHAD ELSBERRY, Assistant Director • JARED CHIZEK, Assistant Director

August 20, 2015

TO: School Administrators

FROM: Alan Beste, Executive Director - IHSAA

RE: IHSAA Member Schools With No Ejections During 2014-2015 Sport Season

It is with great pride that I can send this letter to your school regarding coach and student-athlete conduct during the 2014-2015 school year.

You are one of 171 schools, which calculates to 46% of the IHSAA membership, who had no student-athletes or coaches ejected during the 2014-2015 school year.

So many times we dwell on the negative but this is an opportunity for me to convey to you from the Iowa High School Athletic Association that you should take pride in notifying your coaches and your student-athletes how proud you are of their overall conduct during the 2014-2015 school year.

We continue to see good conduct from our coaches and our student-athletes every year. I realize many times an ejection deals with an emotional outburst and the individual involved regrets what has occurred, but to go through an entire year and not have one flagrant, unsportsmanlike act during any of your competitions, is certainly something to be proud of.

I am proud because I get to send this letter to 46% of our membership, congratulating them on a great year as it relates to conduct and sportsmanship. With the start of the 2015-2016 school year I hope you can use this as a springboard to another great year.

Keep up the good work. Keep the emphasis where we need to have it as it relates to your students and coaches representing your school, community and patrons. We do appreciate your leadership.

At every competition venue and in the stands - - - **CONDUCT COUNTS!!**

Sincerely,

Alan Beste
Executive Director

AB:cc



Iowa Department of Revenue

Director: Courtney M. Kay-Decker
Hoover State Office Building
Des Moines, Iowa 50319
<https://tax.iowa.gov>

SIDNEY COMM SCH DIST NEW081304 36 DATE 08/14/2015
2754 KNOX RD
PO BOX 609
SIDNEY IA 51652-0000

New Fiscal Year 2016 Estimated Local Option Sales Tax or SAVE monthly distribution payments.

The Department of Revenue is required to distribute to participating local option sales tax jurisdictions and to all school districts 95% of their estimated sales tax collections on a monthly basis. If your school district is eligible for supplemental SAVE funds those funds are included in your July 31 monthly estimated payment shown in the table below.

The Department makes a final reconciliation payment on or before November 10 following the end of the fiscal year. If an overpayment has occurred for the fiscal year, the Department will revise and lower your monthly payments beginning with the November payment in the next fiscal year.

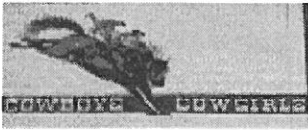
Notify us if you become aware of changes in your business climate that will significantly impact sales tax collections during this fiscal year.

Sales Tax Period	Payment #	Mail Date	Distribution Payment
September 30	1	August 31	23,225.98
	2	September 30	23,225.98
	3	October 31	23,226.00
December 31	4	November 30	23,926.09
	5	December 31	23,926.09
	6	January 31	23,926.10
March 31	7	February 28	20,231.09
	8	March 31	20,231.09
	9	April 30	20,231.11
June 30	10	May 31	23,633.14
	11	June 30	23,633.14
	12	July 31	23,633.16
Supplemental Estimate	12	July 31	0.00

273,048.97

Questions, contact us.

- Estimates (515)242-6224; email Joel.Phipps@Iowa.Gov, Tax Research & Program Analysis.
- Payments (515)281-6106; email Joel.Gabrielson@Iowa.Gov, Local Government Support.



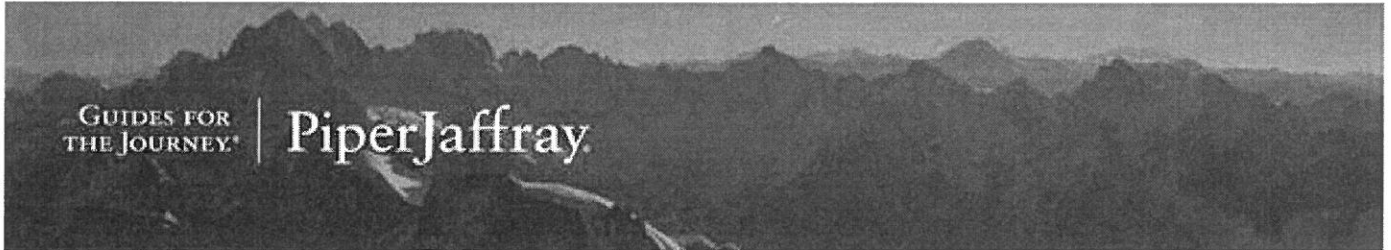
Gregg Cruickshank <gcruickshank@sidney.k12.ia.us>

FY2016 Sales Tax Figures

1 message

Gillaspie, Matthew <Matthew.R.Gillaspie@pjc.com>

Tue, Sep 15, 2015 at 2:59 PM



Piper Jaffray has been working on reconciliation to the State Department of Revenue's recent release of FY2016 sales tax distribution data. Based on information received, it currently appears that the "statewide average" revenue per pupil for FY2016 is \$953 per resident student. This is up from approximately \$919 in FY2015 and \$902 in FY2014 (although the final FY15 per student amount won't be known until the November 2015 "make-up" distribution has been sent out to you all). The \$953 per student amount represents an approximate 3.7% gain in revenue per pupil, assuming the \$919 FY2015 figure is close to accurate. Most of the cash flow estimates we have prepared for you over the past year have assumed a growth rate right at 2.0%, so this is again positive news.

We are now beyond FY2015, during which the final grandfathered county transitioned into the statewide pool mid-year; although that county was below the statewide average in revenue and, thus, had no impact on increasing the statewide distribution amount even in FY2015. As with FY2015, there is no longer any estimated "supplemental" payment made at the end of the year because there is no longer any differentiation between counties considered retail "rich" (above statewide average revenue per pupil) and counties considered retail "poor" (below statewide average revenue per pupil).

We are happy to say that – at least thus far – our analysis of the Department of Revenue's FY2016 database does not reflect any material differences between projected school distribution amounts. This means that it is expected that every school, no matter which county students reside in, should receive approximately \$953 per resident student this year. Keep in mind that the monthly distribution estimates provided to you by the Department of Revenue currently only reflect 95% of their estimated revenue distribution, and that the remaining 5% (or whatever the true "make-up" amount ends up being) will be distributed to you in November 2016 for FY2015 reconciliation.

If you would like to have your local revenue cash flows updated, bonding capacities calculated or if you just have questions about the sales tax and how it is calculated for your local District please let one of us know.

Thank you.

BOND DEBT SERVICE

EXHIBIT 1

Sidney Community School District, Iowa
General Obligation School Refunding Bonds, Series 2011
FINAL
Non-Callable

Dated Date 02/28/2011
Delivery Date 02/28/2011

Period Ending	Principal	Coupon	Interest	Debt Service	Annual Debt Service
06/01/2011			5,729.83	5,729.83	5,729.83
12/01/2011			11,090.00	11,090.00	
06/01/2012	235,000	0.800%	11,090.00	246,090.00	257,180.00
12/01/2012			10,150.00	10,150.00	
06/01/2013	245,000	1.050%	10,150.00	255,150.00	265,300.00
12/01/2013			8,863.75	8,863.75	
06/01/2014	245,000	1.350%	8,863.75	253,863.75	262,727.50
12/01/2014			7,210.00	7,210.00	
06/01/2015	250,000	1.700%	7,210.00	257,210.00	264,420.00
12/01/2015			5,085.00	5,085.00	
06/01/2016	210,000	2.050%	5,085.00	215,085.00	220,170.00
12/01/2016			2,932.50	2,932.50	
06/01/2017	255,000	2.300%	2,932.50	257,932.50	260,865.00
	1,440,000		96,392.33	1,536,392.33	1,536,392.33

EXHIBIT 1

SAVINGS

Sidney Community School District, Iowa
General Obligation School Refunding Bonds, Series 2011
FINAL
Non-Callable

Date	Prior Debt Service	Refunding Debt Service	Refunding Receipts	Refunding Net Cash Flow	Savings	Annual Savings
02/28/2011			2,660.00	-2,660.00	2,660.00	
04/01/2011	-16,500.83				-16,500.83	
06/01/2011	24,751.25	5,729.83		5,729.83	19,021.42	5,180.59
12/01/2011	24,751.25	11,090.00		11,090.00	13,661.25	
06/01/2012	244,751.25	246,090.00		246,090.00	-1,338.75	12,322.50
12/01/2012	21,286.25	10,150.00		10,150.00	11,136.25	
06/01/2013	256,286.25	255,150.00		255,150.00	1,136.25	12,272.50
12/01/2013	17,350.00	8,863.75		8,863.75	8,486.25	
06/01/2014	257,350.00	253,863.75		253,863.75	3,486.25	11,972.50
12/01/2014	13,210.00	7,210.00		7,210.00	6,000.00	
06/01/2015	263,210.00	257,210.00		257,210.00	6,000.00	12,000.00
12/01/2015	8,772.50	5,085.00		5,085.00	3,687.50	
06/01/2016	218,772.50	215,085.00		215,085.00	3,687.50	7,375.00
12/01/2016	4,940.00	2,932.50		2,932.50	2,007.50	
06/01/2017	264,940.00	257,932.50		257,932.50	7,007.50	9,015.00
	1,603,870.42	1,536,392.33	2,660.00	1,533,732.33	70,138.09	70,138.09

Tax Payers Savings

Savings Summary

Dated Date	02/28/2011
Delivery Date	02/28/2011
Savings PV rate	1.774885%
PV of savings from cash flow	66,568.98
Net PV Savings	66,568.98

Refinance in 2011 saved this amount

Discussion
action b

**Agreement to Establish a Consortium
to Jointly Administer an Instructional Program
at Apex Program site
Located within the boundaries of the Glenwood Community School
District**

This Agreement between the member school districts whose signatures appear at the end of this document (hereafter "members"), including the Glenwood Community School District (hereafter "host"), is to establish a jointly administered program for the enrollment of students from the host and members' school districts in the Apex program pursuant to Iowa Code sections 28E.3 and 280.15(1) to provide quality education and activities for students enrolled from each member district, by the most efficient and economically responsible means; and

Whereas, each member wishes to enroll one or more of its students in classes or programs that are offered and available at the Apex program site and that are not otherwise available at each member's site, and

Whereas, the host is willing to jointly administer the programs and activities at the Apex program site with the members with the costs determined as stated in this Agreement, and

Whereas, Iowa Code section 28E.3 provides, in part, that the boards of directors of two or more school districts may by agreement jointly administer any power, privilege or authority each member school district is capable of exercising individually, and

Whereas, Iowa Code section 280.15, subsection 1, provides, in part, that the boards of directors of two or more school districts may by agreement jointly share services of school personnel, acquire and share classrooms, facilities, and equipment,

Therefore, the member school districts agree to establish a jointly administered instructional program in the form of a Consortium as authorized by Iowa Code under the following terms and conditions:

PURPOSE

Each member school district, pursuant to Iowa Code, has responsibility for the educational outcomes of its resident students. Members agreeing to be part of this consortium agreement will become members of the Apex Consortium. A member district currently sending student to the Apex program will be considered an active member. A member district not currently sending students to the Apex program will be considered a non-active member.

This Agreement describes the arrangement for the provision of instructional services for the Apex Consortium programs. This Agreement further describes certain terms and conditions to participate in the Apex program within a Consortium arrangement for the students of each member district, including the host district, and other students not residents of any member district. This Agreement provides a means by which the members may jointly and cooperatively

Daily Billing Estimates

PK-5

Regular Level III Student \$135.00 per day

Daily Rent \$3.45 per day

Total Per Day Charge \$138.45

Annual 1% DCPP \$65.00

Level III Student with 1:1 \$195.00 per day

Daily Rent \$3.45 per day

Total Per Day Charge \$198.45

Annual 1% DCPP \$65.00

6-12

Regular Level III Student \$135.00 per day

Daily Rent \$5.86 per day

Total Per Day Charge \$140.86

Annual 1% DCPP \$65.00

Level III Student with 1:1 \$195.00 per day

Daily Rent \$5.86 per day

Total Per Day Charge \$200.86

Annual 1% DCPP \$65.00

At this time I feel it is ^{Action a} Necessary to resign
as assistant Football coach at Sidney for the 2015
School year.

Erik Fulle

Minutes

**Sidney Community School District
Board of Directors Regular Meeting
August 17, 2015 7:30 p.m. 2754 Knox Road**

Call meeting to order and determine quorum

President Heidi Lowthorp called the meeting to order at 7:30 p.m. Directors present were Heidi Lowthorp, Erika Graham and Brad Johnson. Directors absent were Alisha Ettleman and Larry Holt. Also present were Superintendent Gregg Cruickshank, 7-12 Principal Bill Huntington, PK-6 Principal Linda Spencer, Board Treasurer Jennifer Maher and Board Secretary Janet Lemrick.

Recognition of guests and public comment

There were two guests present. No public comment.

Approve agenda

Motion to approve the agenda was made by Director Graham with second by Director Johnson. Motion carried. Ayes 3 Nays 0

Approve minutes

Motion to approve the amended minutes was made by Director Graham with second by Director Johnson. Motion carried. Ayes 3 Nays 0

Consider bills to pay

Motion to pay the bills as presented was made by Director Johnson with second by Director Graham. Motion carried. Ayes 3 Nays 0

Financials

Motion to approve the financial report was made by Director Graham with second by Director Johnson. Motion carried. Ayes 3 Nays 0

Audiences

Shannon Wehling, Elementary Special Education Instructor, described to the Board the plans to initiate Positive Behavior Intervention and Supports (PBIS) at the elementary this fall. The goal is to create and maintain a positive and safe behavioral environment where everyone strives for excellence and everyone holds each other accountable for reaching their individual, classroom, grade-level and building/district goals.

Reports

Mrs. Spencer gave the PK-6/Curriculum report.

Mr. Huntington gave the 7-12 report.

Mr. Cruickshank gave the superintendent report.

- Board Election is September 8 at the Fremont County Courthouse.
- Facilities are ready for the start of school year.
- Football field restrooms are cleaned and painted.
- Financial audit was August 10. Initial report indicates no areas of noncompliance.

Discussion/action

Instructional Support Levy Resolution of Intent

Motion to introduce the Instructional Support Levy Resolution of Intent was made by Director Johnson with second by Director Graham. Motion carried. Ayes 3 Nays 0

Policy Second Reading

Motion to approve policies 604.1 and 604.7 was made by Director Graham with second by Director Johnson. Motion carried. Ayes 3 Nays 0

Student Handbooks

Motion to approve the student handbooks for the 2015-16 school year was made by Director Johnson with second by Director Graham.

Action

Resignation of Personnel

Motion to accept with regrets the resignation of Kristin Humphries, Elementary Associate and Girls Basketball Coach was made by Director Graham with second by Director Johnson. Motion carried. Ayes 3 Nays 0

Motion to accept with regrets the resignation of Melissa Smith, Preschool Associate, was made by Director Johnson with second by Director Graham. Motion carried. Ayes 3 Nays 0

Employment of Personnel

Motion to hire Jennifer Gammell, Erica Byers, Hannah Sneed as elementary associates and Teresa Shipley as high school life skills associate was made by Director Johnson with second by Director Graham. Motion carried. Ayes 3 Nays 0

Board Comment

The Board wishes everyone good luck in the coming school year and are excited with the preliminary enrollment numbers.

Celebrations

This year's Homecoming theme will be "The Hunger Games". Homecoming is on September 11 and Fremont-Mills will be the opponent.

Theresa Bryant, Head Cook, has been selected as a participant for "Team Up for Success" a two day workshop in Kansas City sponsored by The Institute of Child Nutrition. She is one of 75 participants in the USDA Mountain Plains Region states.

High School gym floor has a new design.

Adjournment

Motion to adjourn at 8:26 p.m. was made by Director Graham with second by Director Johnson. Motion carried. Ayes 3 Nays 0

Next regular scheduled meeting will be September 21, 2015

This publication of minutes is the unofficial report of action taken. Official minutes are available for review at the Sidney Community School District after approval at the next regular board meeting.

Accounts Payable

SIDNEY SCHOOL BOARD REPORT OF EXPENDITURES SIDNEY COMMUNITY SCHOOL

<u>Payroll</u>	CLAIMS PAID IN	September-2015 <u>Accounts Payable</u>	
Salaries/Wages	250,464.79	General	99,974.73
District Expense Insurance	15,418.70	Lunch Fund	9,766.02
IPERS	22,212.03	Activity Fund	3,772.12
Medicare/Social Security	18,496.78	School House	<u>76,890.00</u>
District Total	<u>306,592.30</u>	District Total	<u>190,402.87</u>

SIDNEY COMMUNITY SCHOOL DISTRICT BOARD REPORT FOR September-2015

Fund 10 OPERATING FUND

ADVENTURE LIGHTING	30.20
AEA267	30.00
ATCHISON HOLT ELECTRIC	6,209.90
BAND SHOPPE	196.05
BARRETT, PAT	150.00
BECK, JENNIFER	140.84
BLACK HILLS ENERGY	76.33
BMO HARRIS MASTERCARD	23,347.64
BOAT SHOP, THE	1,059.80
BUENA VISTA COLLEGE	2,958.00
CITY OF SIDNEY	1,044.20
CLARINDA CHAMBER OF COMMERCE	100.00
CONTINENTAL RESEARCH	182.58
CONTINUUM ENERGY	472.59
DAMRAU, KRISTY	66.00
DECKER INC	129.12
DEPARTMENT OF EDUCATION	40.00
DOWLING, DAVE	230.55
EDUCATIONAL TRANSITIONS PUBLIC	3,000.00
EICKEMEYER REFRIGERATION	308.00
FLAGHOUSE INC	266.87
GLENWOOD COMMUNITY SCHOOL	2,640.00
GREEN HILLS AEA	125.40
FARRAGUT COMMUNITY SCHOOL	821.74
HALVORSON, MEGHAN	320.00
HAMBURG COMMUNITY SCHOOL	19,437.98
HANNAH, SNEED	33.50
HAYES MECHANICAL	4,178.65
HEARTLAND TECHNOLOGY SOLUTIONS	142.50
HENNEMAN AUTO PARTS	328.78
HERFF JONES	3,197.00
HILLS PLUMBING AND HEATING	342.15
HOLT GAS COMPANY	1,594.61
HOUCHEM BINDERY	400.50
HOWARD CLOTHING	32.50
IOWA COMMUNICATIONS NETWORK	796.34
IOWA SCHOOL FINANCE	168.00
IOWA WESTERN COMMUNITY COLLEGE	250.00
JEFF & DEB NORTON	1,144.00
JOHN GOWING PLUMBING & HEATING	648.20
JUREY, SALLY	22.50
KOZISEK, CHELSEY	50.00
LOU'S SPORTING GOODS	505.64
MAHER, JENNIFER	43.50
MARION, RACHAEL	43.00
MATHESON TRI-GAS INC	26.66
MEDICAL CLINIC PC	165.00
MEGHAN HALVORSON,	107.23
MIDAMERICAN ENERGY	2,754.29
MILLER BUILDING SUPPLY CO	171.01
MILLION DOLLAR LAWNS	820.00
MITCHELL, ERIKA	77.00
MORELAND INC	345.00
MORELAND, ALISSA	10.50
NOLTE CORNMAN JOHNSON PC	2,480.00
OSWALD, KATHY	39.07
PIERCE, BARB	66.00
PLANBOOK	378.00
POSTMASTER	90.00
REALLY GREAT READING COMPANY	249.00
RICHARDSON SANITATION	505.00

SAI	105.00
SCHOLASTIC INC	9,502.65
SCHOOL BUS SALES	96.45
SCHOOL SPECIALTY INC	352.44
SHELDON, RHONDA	59.05
SHIPLEY FLOORING	170.00
SHORE MOTOR COMPANY	691.65
SIDNEY ARGUS HERALD	914.39
SIDNEY FOODS LTD	648.88
SIDNEY SCD ACTIVITY FUND	62.00
SOFTWARE UNLIMITED INC	50.00
SOUTHWEST IOWA PLANNING	18.00
SPIRAL COMMUNICATIONS	1,235.01
TTI NATIONAL INC	41.06
TURF WORKS	396.23
VALLEY NEWS PUBLICATIONS	43.00

Fund Total: 99,974.73
Checking Account Total: \$99,974.73

FUND 61 SCHOOL NUTRITION FUND

ANDERSON ERICKSON DAIRY CO	659.59
BMO HARRIS MASTERCARD	848.79
KECK INC	2,098.77
SIDNEY CSD GENERAL FUND	6,158.87

Fund Total: 9,766.02
Checking Account#2 Total: \$9,766.02

Fund 22 MANAGEMENT

AEA267	644.04
Fund Total:	<u><u>\$644.04</u></u>

Fund 36 PPEL

Fund Total:	<u><u>\$0.00</u></u>
--------------------	----------------------

Fund 33 LOSST

BMO HARRIS MASTERCARD	8,509.18
GLASCOCK FLOORS IN	23,651.20
HAYES MECHANICAL	1,006.76
HILLS PLUMBING AND HEATING	1,145.45
ITSAVVY LLC	1,056.00
IXL LEARNING	650.00
MAC TO SCHOOL	5,985.00
MIDWEST PUMPING	325.00
SOUTHWEST IOWA PARKING LOT	17,109.10
SPIRAL COMMUNICATIONS	16,760.00
TROXEL COMMUNICATIONS	48.27

Fund Total: \$76,245.96

Fund 40 DEBT SERVICE

Fund Total:	<u><u>0.00</u></u>
--------------------	--------------------

Checking Account#4 Total: \$76,890.00

Fund 21 STUDENT ACTIVITY FUND

ATLANTIC CSD	140.00
BEDFORD HIGH SCHOOL	60.00
BELT, RICH	100.00
BMO HARRIS MASTERCARD	2,694.34
CLASSIC SPORTSWEAR & AWARDS	1,123.75
DURNER, MARK	100.00
FREMONT COUNTY VET	50.00
GOAL LINE ATHLETICS	107.50
GRAPHIC EDGE	345.33
HOWARD CLOTHING	34.00
IOWA GIRLS COACHES ASSOC	75.00
JEWELL, CHRIS	100.00
JR CLASS PARENTS 15-16	225.00
KETTWICK, RENEE	200.00
LARSEN, KENT	305.39
LARSEN, LEXY	50.00
LOU'S SPORTING GOODS	29.99
MCCLINTOCK, AMY	150.00
MIDWEST SPORTING GOODS	63.00
PEPSI COLA COMPANY	1,062.14
REED KIM	96.91
ROBESON, STEVE	100.00
RYDZYASKI, JOHN	100.00
SCARLETT, DONNA	100.00
SCHULTZ, BILL	100.00
SELL, ROGER	100.00
SIDNEY FOODS LTD	21.23
SIDNEY MUSIC ALLIANCE	348.60
SINNENT, JEFF	100.00
SINNENT, PAUL	100.00
TURNER, TIM	100.00
ULTIMATE TEAM SALES	1,354.00
WULK, MATT	100.00

Fund Total: 3,772.12

Checking Account #3 Total: \$3,772.12

Checking 1

ADVENTURE LIGHTING	LIGHTS	30.20
AEA267	REPAIRS	30.00
ATCHISON HOLT ELECTRIC	SERVICE	6,209.90
BAND SHOPPE	FLAGS FOR BAND	196.05
BARRETT, PAT	AUG MILEAGE REIMBURSEMENT	150.00
BECK, JENNIFER	LAB SUPPLIES REIMBURSEMENT	140.84
BLACK HILLS ENERGY	SERVICE	76.33
BMO HARRIS MASTERCARD	PCARDS	23,347.64
BOAT SHOP, THE	BATTERIES FOR FLOOR MACHINES	1,059.80
BUENA VISTA COLLEGE	GODFREAD TUTION	2,958.00
CITY OF SIDNEY	WATER	1,044.20
CLARINDA CHAMBER OF COMMERCE	MARCHING BAND REGISTRATION	100.00
CONTINENTAL RESEARCH	TRIPLE PLAY - MAINT SUPPLIES	182.58
CONTINUUM ENERGY	SERVICE	472.59
DAMRAU, KRISTY	AUG MILEAGE REIMBURSEMENT	66.00
DECKER INC	TOLIET SEATS	129.12
DEPARTMENT OF EDUCATION	INSPECTIONS	40.00
DOWLING, DAVE	REIMBURSEMENT FOR SUPPLIES	230.55
EDUCIONAL TRANSITIONS PUBLIC	AUG/SEPTEMBER SERVICES	3,000.00
EICKEMEYER REFRIGERATION	RANCO TEMP CONTROL REPAIRS	308.00
FLAGHOUSE INC	SPED SUPPLIES	266.87
GLENWOOD COMMUNITY SCHOOL	APEX - HARDEN	2,640.00
GREEN HILLS AEA	SUPERINTENDENT ASSOCIATION DUES	125.40
FARRAGUT COMMUNITY SCHOOL	SHARED SERVICES	821.74
HALVORSON, MEGHAN	LETRS TRAINING	320.00
HAMBURG COMMUNITY SCHOOL	SPED BILLING	19,437.98
HANNAH, SNEED	REIMBURSEMENT CLASS D LICENSE FOR TRANSP	33.50
HAYES MECHANICAL	REPAIRS	4,178.65
HEARTLAND TECHNOLOGY SOLUTIONS	REMOTE LABOR	142.50
HENNEMAN AUTO PARTS	TRANSPORATATION SUPPLIES	328.78
HERFF JONES	CHOIR ROBES	3,197.00
HILLS PLUMBING AND HEATING	FILTERS/REPAIRS	342.15
HOLT GAS COMPANY	FUEL	1,594.61
HOUCHEM BINDERY	ELEM CLASSROOM BOOKS	400.50
HOWARD CLOTHING	JH RIBBONS	32.50
IOWA COMMUNICATIONS NETWORK	ICN SERVICE	796.34
IOWA SCHOOL FINANCE	BACKGROUND CHECKS	168.00
IOWA WESTERN COMMUNITY COLLEGE	BUS DRIVER CLASS	250.00
JEFF & DEB NORTON	AUG MILEAGE REIMBURSEMENT	1,144.00
JOHN GOWING PLUMBING & HEATING	URINAL REPAIRS AT ELM	648.20
JUREY, SALLY	AUG MILEAGE REIMBURSEMENT	22.50
KOZISEK, CHELSEY	REIMBURSEMENT FOR ECI MATERIAL FOR PREK	50.00
LOU'S SPORTING GOODS	FOOTBALL HELMETS	505.64
MAHER, JENNIFER	JULY & AUG MILEAGE REIMBURSEMENT	43.50
MARION, RACHAEL	MILEAGE REIMBURSEMENT	43.00
MATHESON TRI-GAS INC	SUPPLIES	26.66
MEDICAL CLINIC PC	DOT PX - PAPER	165.00
MEGHAN HALVORSON,	ELL REIMBURSEMENT	107.23
MIDAMERICAN ENERGY	SERVICE	2,754.29
MILLER BUILDING SUPPLY CO	MAINT SUPPLIES	171.01
MILLION DOLLAR LAWN	GROUND STERILIZATION	820.00
MITCHELL, ERIKA	AUG MILEAGE REIMBURSEMENT	77.00
MORELAND INC	3 VACUUMS	345.00
MORELAND, ALISSA	AUG MILEAGE REIMBURSEMENT	10.50
NOLTE CORNMAN JOHNSON PC	AUDIT FEE	2,480.00
OSWALD, KATHY	REIMBURSE FOR TAG SUPPLIES	39.07
PIERCE, BARB	AUG MILEAGE REIMBURSEMENT	66.00
PLANBOOK	TEACHER SUBSCRIPTIONS	378.00
POSTMASTER	POST OFFICE BOX RENTAL	90.00
REALLY GREAT READING COMPANY	SPED SUPPLIES	249.00
RICHARDSON SANITATION	SERVICE	505.00
SAI	BLENDED LEARNING - CRUICKSHANK	105.00
SCHOLASTIC INC	DO THE MATH	9,502.65
SCHOOL BUS SALES	TRANSPORTATION SUPPLIES	96.45
SCHOOL SPECIALTY INC	ART SUPPLIES	352.44
SHELDON, RHONDA	REIMBURSEMENT SCIENCE SUPPLIES	59.05
SHIPLEY FLOORING	REPAIRS - GLUE CARPET	170.00
SHORE MOTOR COMPANY	SPED VAN REPAIRS	691.65
SIDNEY ARGUS HERALD	ADVERTISING	914.39
SIDNEY FOODS LTD	CHARGE ACCOUNT	648.88
SIDNEY SCD ACTIVITY FUND	GENERAL FUND OWES ACT FUND -	62.00
SOFTWARE UNLIMITED INC	FEE	50.00
SOUTHWEST IOWA PLANNING	TRANSPORTATION SERVICES SPED	18.00
SPIRAL COMMUNICATIONS	PHONE SERVICE	1,235.01
TTI NATIONAL INC	SERVICE	41.06
TURF WORKS	SUPPLIES	396.23
VALLEY NEWS PUBLICATIONS	SUBSCRIPTION	43.00

Checking 2

ANDERSON ERICKSON DAIRY CO
 BMO HARRIS MASTERCARD
 KECK INC
 SIDNEY CSD GENERAL FUND

MILK 659.59
 PCARDS 848.79
 COMMODITIES 2,098.77
 SEPT NUTRITION PAYROLL 6,158.87

9,766.02
 9,766.02

Checking 3

ATLANTIC CSD
 BEDFORD HIGH SCHOOL
 BELT, RICH
 BMO HARRIS MASTERCARD
 CLASSIC SPORTSWEAR & AWARDS
 DURNER, MARK
 FREMONT COUNTY VET
 GOAL LINE ATHLETICS
 GRAPHIC EDGE
 HOWARD CLOTHING
 IOWA GIRLS COACHES ASSOC
 JEWELL, CHRIS
 JR CLASS PARENTS 15-16
 KETTICK, RENEE
 LARSEN, KENT
 LARSEN, LEXY
 LOU'S SPORTING GOODS
 MCCLINTOCK, AMY
 MIDWEST SPORTING GOODS
 PEPSI COLA COMPANY
 REED KIM
 ROBESON, STEVE
 RYDZYASKI, JOHN
 SCARLETT, DONNA
 SCHULTZ, BILL
 SELL, ROGER
 SIDNEY FOODS LTD
 SIDNEY MUSIC ALLIANCE
 SINNENT, JEFF
 SINNENT, PAUL
 TURNER, TIM
 ULTIMATE TEAM SALES
 WULK, MATT

VB ENTRY FEE 140.00
 JH VB ENTRY FEE 60.00
 FB OFFICAL 091115 100.00
 AMAZON - HOMECOMING CROWN/FOOTBALL 2,694.34
 BPA SHIRTS 1,123.75
 FB OFFICAL 091115 100.00
 FB ATH TAPE 50.00
 JH FB SUPPLIES 107.50
 BPA SHIRT FUNDRAISER 345.33
 FB BOOK 34.00
 MEMBERSHIP FEE 75.00
 FB OFFICAL 091115 100.00
 JR CLASS OWES JR CLASS AFTERPROM 225.00
 VB OFFICAL 090815 200.00
 POP & SUPPLIES REIMBURSEMENT 305.39
 JH VB OFFICAL 50.00
 FB SUPPLIES 29.99
 REIMBURSEMENT VB CAMP FEE 150.00
 BASEBALL SUPPLIES 63.00
 POP 1,062.14
 REIMBURSEMENT FOR FB MEAL 96.91
 FOOTBALL OFFICAL 8/28/15 100.00
 FOOTBALL OFFICAL 8/28/15 100.00
 VB OFFICAL 090815 100.00
 FOOTBALL OFFICAL 8/28/15 100.00
 VB OFFICAL 091515 100.00
 CHARGE ACCOUNT 21.23
 HS STU CO PAID FOR HOMECOMING DJ 348.60
 FOOTBALL OFFICAL 8/28/15 100.00
 FOOTBALL OFFICAL 8/28/15 100.00
 FB OFFICAL 091115 100.00
 BOYS BASKETBALL UNIFORM 1,354.00
 FB OFFICAL 091115 100.00

9,736.18
 9,736.18

Checking 4

AEA267

LAPTOP REPAIRS 644.04

644.04

Checking 4

BMO HARRIS MASTERCARD
 GLASCOCK FLOORS IN
 HAYES MECHANICAL
 HILLS PLUMBING AND HEATING
 ITSAVVY LLC
 IXL LEARNING
 MAC TO SCHOOL
 MIDWEST PUMPING
 SOUTHWEST IOWA PARKING LOT
 SPIRAL COMMUNICATIONS
 TROXEL COMMUNICATIONS

PCARDS 8,509.18
 NEW GYM FLOOR 23,651.20
 REPLACED BLOWER MOTOR 1,006.76
 AG BLDG EXHAUST FAN WORK 1,145.45
 HP PRODESK, LED MONITOR 1,056.00
 SITE LICENSE 650.00
 MAC BOOKS 5,985.00
 LOAD OF ROCK 325.00
 PARKING LOT REPAIRS 17,109.10
 SERVICE INSTALLATION 16,760.00
 CEILING PLATE 48.27

76,245.96
 76,890.00

cards

Vendor ID: BMOHARRIS Vendor Name: BMO HARRIS MASTERCARD

Entry Date	GL Month	Status	Invoice Number	Purchase Order Number	Requisition Numbers	Checking Account ID	Check Number	Check Date	Posted	Void
09/21/2015	09/2015	INV	090515 - SECOND			1		09/21/2015	P	
COA Number:	10 3000 1000	100	0000 618							
Description:	AMAZON - ATOMIC CLOCKS									
COA Number:	10 3000 1000	100	0000 618							
Description:	AMAZON - BOOKS									
COA Number:	10 3000 1000	100	0000 618							
Description:	AMAZON - OFFICE SUPPLIES									
COA Number:	10 3000 1000	100	0000 618							
Description:	AMAZON - WHITEBOARDS									
COA Number:	10 3000 1000	100	0000 618							
Description:	BARNES & NOBLE - BOOKS									
COA Number:	10 3000 1000	100	0000 618							
Description:	CHEG - BOOKS									
COA Number:	10 3000 1000	100	0000 618							
Description:	CLASSROOM ESSENTIALS - CHAIRS									
COA Number:	10 3000 1000	100	0000 618							
Description:	SCHOOL SPECIALTY - OFFICE SUPPLIES									
COA Number:	10 3000 1000	100	0000 618							
Description:	AMAZON - ACCOUNTING TEXTBOOKS									
COA Number:	10 3000 1000	100	0000 641							
Description:	AMAZON - CALCULUS BOOK									
COA Number:	10 3000 1000	100	0000 641							
Description:	AMAZON - TEXTBOOKS									
COA Number:	10 3000 1000	100	0000 641							
Description:	HOUGHTON MIFFLIN - TEXTBOOKS ALGEBRA									
COA Number:	10 3000 1000	100	0000 641							
Description:	TEXTBOOK WEARHOUSE - TEXTBOOKS									
COA Number:	10 3000 1000	100	0000 641							
Description:	TEXTBOOK WEARHOUSE - TEXTBOOKS									
COA Number:	10 3000 1000	114	0000 618							
Description:	PETSMAART - SCIENCE SUPPLIES									
COA Number:	10 3000 1000	217	3303 618							
Description:	TEXTBOOK WEARHOUSE - SPED TEXTBOOK									
COA Number:	10 3000 1000	217	3303 618							
Description:	UNIQUE LARNING - SPED SUPPLIES									
COA Number:	10 3000 1000	217	3303 618							
Description:	WALMART - LIFE SKILLS									
COA Number:	10 3000 1000	217	3303 618							
Description:	WALMART - LIFE SKILLS SUPPLIES									
COA Number:	10 3000 2410	000	0000 531							
Description:	UPS - POSTAGE CHEERLEADING									
COA Number:	10 3000 2410	000	0000 531							
Description:	USPS - POSTAGE									
COA Number:	10 3000 2410	000	0000 580							
Description:	HOLIDAY INN - HUNTINGTON TRAVEL									
09/21/2015	09/2015	INV	090515 - SECOND			2		09/21/2015	P	
COA Number:	61 0000 3110	000	0000 618							
Description:	AMAZON - LUNCH ROOM TRAYS									
COA Number:	61 0000 3110	000	0000 618							
Description:	WALMART - KITCHEN SUPPLIES									
09/21/2015	09/2015	INV	090515 - SECOND			3		09/21/2015	P	
COA Number:	21 0000 1000	950	7006 618							
Description:	AMAZON - HOMECOMING CROWN/FOOTBALL									
COA Number:	21 0000 1000	950	7006 618							
Description:	ANDERSONS - HOMECOMING SUPPLIES									
09/21/2015	09/2015	INV	090515 - SPENCE			1		09/21/2015	P	
COA Number:	10 0000 2320	000	0000 580							
Description:	FONGS - SAI DINNER (GREGG, LIN, BILL)									
COA Number:	10 1100 1000	100	0000 618							
Description:	TEACHING STRATEGIES - CHILD PORTFOLIO									
COA Number:	10 1100 1000	211	3301 618							
Description:	TEACHING STRATEGIES - CHILD PORTFOLIO									
COA Number:	10 1900 1000	100	0000 294							
Description:	GREEN HILLS - ECI TRAINING									
COA Number:	10 1900 1000	100	0000 618							
Description:	AMAZON - ELL BOOKS									
COA Number:	10 1900 1000	100	0000 618							
Description:	CENTER FOR COLLABORATIVE - CLASSROOM									

475.00	
152.92	
25.62	
557.96	
17.08	
62.69	
1,347.50	
167.41	
866.27	
60.00	
806.53	
275.15	
292.40	
393.53	
232.38	
16.50	
449.00	
233.66	
212.06	
50.56	
13.00	
199.36	
6,906.58	
825.60	
23.19	
848.79	
82.43	
76.98	
159.41	
44.00	
365.75	
365.75	
50.00	
55.72	
748.44	

Vendor Name: Inquiry Month 09/2015; Vendor ID BMOHARRIS
Vendor Inquiry

Vendor ID: BMOHARRIS Vendor Name: BMO HARRIS MASTERCARD

Entry Date	GL Month	Status	Invoice Number	Purchase Order Number	Requisition Numbers	Checking Account ID	Check Number	Check Date	Posted	Void
COA Number:	10 1900 1000	100 0000	618							
Description:	DECKER - CLASSROOM SUPPLIES									
COA Number:	10 1900 1000	100 0000	618							
Description:	DISCOUNT SCHOOL SUPPLY - CLASS SUPPLIES									
COA Number:	10 1900 1000	100 0000	618							
Description:	SCHOOL SPECIALTY - CLASSROOM SUPPLIES									
COA Number:	10 1900 1000	211 3301	294							
Description:	GREEN HILLS - ECI TRAINING									
COA Number:	10 1900 2410	000 0000	580							
Description:	CASEYS - FUEL SAI TRIP									
COA Number:	10 1900 2410	000 0000	580							
Description:	HOLIDAY INN - SAI LINDA									
COA Number:	10 1900 2410	000 0000	580							
Description:	MCDONADS - LINDA SAI									
COA Number:	10 1900 2410	000 0000	580							
Description:	PARKING RAMPS DSM - PARKING SAI									
COA Number:	10 1900 2410	000 0000	580							
Description:	ROYAL MILE - LUNCH SAI (GREG,LIN,BILL)									
COA Number:	10 3000 2410	000 0000	580							
Description:	COURT AVE BREWING - SAI (GRG,LIN,BIL)									
						4,321.21				
09/21/2015	09/2015	INV	090515 CLATON				4	09/21/2015	P	
COA Number:	33 0000 2232	000 0000	618							
Description:	AMAZON - FLASH DRIVES									
COA Number:	33 0000 2232	000 0000	618							
Description:	AMAZON - LAPTOP BATTERY									
						42.24				
						36.58				
						78.82				
09/21/2015	09/2015	INV	090515 ELEM OFF				1	09/21/2015	P	
COA Number:	10 0000 2620	000 0000	618							
Description:	SAMS CLUB - CUSTODIAL SUPPLIES									
COA Number:	10 1900 1000	100 0000	294							
Description:	CASEYS - PD LUNCH									
COA Number:	10 1900 1000	100 0000	294							
Description:	GREEN HILLS - HENDERSON ECI TRAINING									
COA Number:	10 1900 1000	100 0000	294							
Description:	IWCC - PARA CLASS X4									
COA Number:	10 1900 1000	100 0000	618							
Description:	HW W/O TEARS - CLASSROOM SUPPLIES									
COA Number:	10 1900 1000	100 0000	618							
Description:	HW W/O TEARS - CLASSROOM SUPPLIES									
COA Number:	10 1900 1000	100 0000	618							
Description:	NIKY'S FOLDERS - 4 PGK METALIC GOLD									
COA Number:	10 1900 1000	100 0000	618							
Description:	SCHOOL SPECIALTIES - CLASSROOM SUPPLIES									
COA Number:	10 1900 1000	100 0000	618							
Description:	SCHOOL SPECIALTIES - SUPPLIES									
COA Number:	10 1900 1000	100 0000	618							
Description:	USI LAMINATE - LAMINATING SUPPLIES									
COA Number:	10 1900 1000	102 0000	618							
Description:	WALMART - ART SUPPLIES									
COA Number:	10 1900 1000	217 3303	618							
Description:	SCHOLASTIC - SPED SUPPLIES									
COA Number:	10 1900 2410	000 0000	531							
Description:	USPS - POSTAGE									
						335.25				
						264.09				
						73.41				
						18.77				
						25.48				
						7,936.97				
09/21/2015	09/2015	INV	090515 MAHER				1	09/21/2015	P	
COA Number:	10 0000 2510	000 0000	294							
Description:	INTEREST									
COA Number:	10 0000 2510	000 0000	531							
Description:	USPS - POSTAGE									
COA Number:	10 0000 2600	000 0000	430							
Description:	ORKIN - ANNUAL PEST CONTROL									
COA Number:	10 0000 2620	000 0000	618							
Description:	ADVENTURE LIGHTING - LIGHTSS									
COA Number:	10 0000 2620	000 0000	618							
Description:	CAPITAL SANITARY - CUSTODIAL SUPPLIES									
COA Number:	10 0000 2620	000 0000	618							
Description:	MEYER LAB - CLEANING SUPPLIES									
						172.04				
						23.53				
						1,174.69				
						231.20				
						576.28				
						603.59				

Vendor ID: BMOHARRIS Vendor Name: BMO HARRIS MASTERCARD

Entry Date	GL Month	Status	Invoice Number	Purchase Order Number	Requisition Numbers	Checking Account ID	Check Number	Check Date	Posted	Void
COA Number:	10 0000	2700	000 0000 618		CORNHUSTER - BUS SUPPLIES	679.84				
COA Number:	10 3000	1000	100 0000 618		REALLY GREAT READING - TEACHER WORKSHOPS	124.50				
COA Number:	10 3000	1000	100 0000 641		TEXTBOOK WEARHOUSE - TEXTBOOKS	472.71				
COA Number:	10 3000	1000	211 3301 618		REALLY GREAT READING - TEACHER WORKSHOPS	124.50				
						<u>4,182.88</u>				
09/21/2015	09/2015	INV	090515 MAHER			3		09/21/2015	P	
COA Number:	21 0000	1000	910 8000 618		CUSTOM INK - SR CLASS SHIRTS HOMECOMING	492.15				
COA Number:	21 0000	1000	910 8007 618		CUSTOM INK - SOPH CLASS SHIRTS HOMECOMIN	268.81				
COA Number:	21 0000	1000	910 8010 618		GRAPHIC EDGE - JR CLASS SHIRTS HOMECOMIN	362.57				
COA Number:	21 0000	1000	920 8001 618		OMNI CHEER - CHEER SUPPLIES	458.35				
COA Number:	21 0000	1000	920 8001 618		SUPERIOR CHEER - CHEER UNIFORMS	938.00				
COA Number:	21 0000	1000	920 8001 618		UPS - SHIPPING CHEER UNIFORMS	15.05				
						<u>2,534.93</u>				
09/21/2015	09/2015	INV	090515 MAHER			4		09/21/2015	P	
COA Number:	33 0000	1000	100 0000 615		HUDL - ATHLETIC SOFTWARE	999.00				
COA Number:	33 0000	2700	000 0000 434		VETTER EQUIP - BUS REPAIRS	7,431.36				
						<u>8,430.36</u>				
Total: INV						<u>35,399.95</u>				



Iowa Department of Education



Payments to Department of Education Subrecipients

To change the display, select a different Sort by, Funding, Fiscal Year, or Warrant Issued Date and click the 'GO' button.

Sort by: Date then Funding ▾	Select Funding: All ▾	Select Fiscal Year: All ▾	Warrants issued between 9/14/2015 and 9/14/2015	Go	EXIT
---------------------------------	--------------------------	------------------------------	--	----	------

Sidney Comm School District-00002131478

Warrant Date	Fiscal Year	Funding	Comment	Uniform Financial Accounting Source Code	Amount
9/14/2015	2016	School Foundation Aid	State Aid	Various	\$175,948.00
TOTAL					\$175,948.00

Please contact [Brad Albers](#) or [Jeff Berger](#) with questions regarding deposits on this website.

If your deposit is not displayed on this website, it was not a disbursement by the Department of Education. Contact the Department of Administrative Services for more information.



Iowa Department of Education



Payments to Department of Education Subrecipients

To change the display, select a different Sort by, Funding, Fiscal Year, or Warrant Issued Date and click the 'GO' button.

Sort by: Date then Funding ▼	Select Funding: All	Select Fiscal Year: All ▼	Warrants issued between 9/1/2015 and 9/1/2015	Go	EXIT
---------------------------------	------------------------	------------------------------	--	----	------

Sidney Comm School District-0002131478					
Warrant Date	Fiscal Year	Funding	Comment	Uniform Financial Accounting Source Code	Amount
9/1/2015	2016	Successful Progression for Early Readers	Early Literacy	3342	\$14,414.00
TOTAL					\$14,414.00

Please contact [Brad Albers](#) or [Jeff Berger](#) with questions regarding deposits on this website.

If your deposit is not displayed on this website, it was not a disbursement by the Department of Education. Contact the Department of Administrative Services for more information.



Iowa Department of Education



Payments to Department of Education Subrecipients

To change the display, select a different Sort by, Funding, Fiscal Year, or Warrant Issued Date and click the 'GO' button.

Sort by: Date then Funding ▼	Select Funding: All ▼	Select Fiscal Year: All ▼	Warrants issued between 8/24/2015 and 8/24/2015	Go	EXIT
---------------------------------	--------------------------	------------------------------	---	----	------

Sidney Comm School District-00002131478					
Warrant Date	Fiscal Year	Funding	Comment	Uniform Financial Accounting Source Code	Amount
8/24/2015	2015	Title I-Program	General	4501, 4508	\$14,735.00
TOTAL					\$14,735.00

Please contact [Brad Albers](#) or [Jeff Berger](#) with questions regarding deposits on this website.

If your deposit is not displayed on this website, it was not a disbursement by the Department of Education. Contact the Department of Administrative Services for more information.



Iowa Department of Education



Payments to Department of Education Subrecipients

To change the display, select a different Sort by, Funding, Fiscal Year, or Warrant Issued Date and click the 'GO' button.

Sort by: Date then Funding ▾	Select Funding: All ▾	Select Fiscal Year: All ▾	Warrants issued between 8/20/2015 and 8/20/2015	Go	EXIT
---------------------------------	--------------------------	------------------------------	--	----	------

Sidney Comm School District-00002131478					
Warrant Date	Fiscal Year	Funding	Comment	Uniform Financial Accounting Source Code	Amount
8/20/2015	2015	School Foundation Aid	2015 Foster Care Special Ed	Various	\$36,158.29
8/20/2015	2015	School Foundation Aid	2015 Foster Care General	Various	\$3,189.00
TOTAL					\$39,347.29

Please contact [Brad Albers](#) or [Jeff Berger](#) with questions regarding deposits on this website.

If your deposit is not displayed on this website, it was not a disbursement by the Department of Education. Contact the Department of Administrative Services for more information.



Iowa Department of Education



Payments to Department of Education Subrecipients

To change the display, select a different Sort by, Funding, Fiscal Year, or Warrant Issued Date and click the 'GO' button.

Sort by: Date then Funding ▼	Select Funding: All ▼	Select Fiscal Year: All ▼	Warrants issued between 8/12/2015 and 8/12/2015	Go	EXIT
---------------------------------	--------------------------	------------------------------	--	----	------

Sidney Comm School District-00002131478					
Warrant Date	Fiscal Year	Funding	Comment	Uniform Financial Accounting Source Code	Amount
8/12/2015	2015	Vocational Education Secondary	State Secondary Reimbursement	3261	\$4,188.76
TOTAL					\$4,188.76

Please contact [Brad Albers](#) or [Jeff Berger](#) with questions regarding deposits on this website.

If your deposit is not displayed on this website, it was not a disbursement by the Department of Education. Contact the Department of Administrative Services for more information.

Fremont County Treasurer

Local Revenue

DATE: 09/01/2015

Funds Collected For the Month of August
Apportionment of Funds Ordered **Sidney School**

Order No. 55
Fund 65004
Cust# 0001150

Sidney School
Secretary of School Board
PO Box 609
Sidney IA 51652-0609

Month	Description	Amount	
08	Current Net Prop. Taxes	5,975.17	*
08	Agricultural Land Tax Credit	1,311.60	*
	** Total 04 Reg.Plant/Eq	7,286.77	**
08	Current Net Prop. Taxes	30,097.75	*
08	Agricultural Land Tax Credit	6,606.72	*
	** Total 06 Debt Service	36,704.47	**
	*** Total Order Issued	\$43,991.24	***

Fremont County Treasurer

DATE: 09/01/2015

Funds Collected For the Month of August
Apportionment of Funds Ordered **Sidney School**

Order No. 51
Fund 65004
Cust# 0001137

Sidney School
Secretary of School Board
PO Box 609
Sidney IA 51652-

Month	Description	Amount	
08	Current Net Prop. Taxes	211,359.52	*
08	Agricultural Land Tax Credit	47,371.43	*
	** Total 01 General	258,730.95	**
08	Current Net Prop. Taxes	3,928.93	*
08	Agricultural Land Tax Credit	862.40	*
	** Total 09 ISL	4,791.33	**
	*** Total Order Issued	\$263,522.28	***

Fremont County Treasurer

DATE: 09/01/2015

Funds Collected For the Month of August
Apportionment of Funds Ordered **Sidney School**

Order No. 56
Fund 65004

Cust# 0001151

Sidney School
Secretary of School Board
PO Box 609
Sidney IA 51652-0609

Month	Description	Amount	
08	Current Net Prop. Taxes	13,587.01	*
08	Agricultural Land Tax Credit	3,045.18	*
	** Total 08 Management	16,632.19	**
	*** Total Order Issued	\$16,632.19	***

Activity Fund Balance Report - Summary - Include Encumbrances

08/2015 - 08/2015

Regular; Beginning Month 08/2015; Processing Month 08/2015; Fund Number 21

Fund: 21 STUDENT ACTIVITY FUND

Chart of Account Number	Chart of Account Description	Beginning Balance	Expenses	Revenues	Outstanding AP	Outstanding PO	Balance Change	Balance
21 729 000 1920 000	DAISY HUMMEL MEMORIAL	229.61	0.00	0.00	0.00	0.00	0.00	229.61
21 729 000 6110 910	FUND BALANCE - DRAMA CLUB	607.75	50.00	0.00	0.00	0.00	0.00	557.75
21 729 000 6200 910	FUND BALANCE - MUSICAL	0.00	0.00	0.00	0.00	0.00	0.00	0.00
21 729 000 6210 910	FUND BALANCE - VOCAL MUSIC	185.52	0.00	0.00	0.00	0.00	0.00	185.52
21 729 000 6211 910	FUND BAL - SWING CHOIR/JAZZ BAND	117.90	0.00	0.00	0.00	0.00	0.00	117.90
21 729 000 6600 920	FUND BALANCE - JH ATHLETICS	955.00	0.00	0.00	0.00	0.00	0.00	955.00
21 729 000 6610 920	FUND BALANCE - JH GIRLS BASKETBALL TEAM	0.00	0.00	0.00	0.00	0.00	0.00	0.00
21 729 000 6660 920	FUND BALANCE - GOLF	0.00	0.00	0.00	0.00	0.00	0.00	0.00
21 729 000 6670 920	SWIMMING FUND BALANCE	0.00	0.00	0.00	0.00	0.00	0.00	0.00
21 729 000 6710 920	FUND BALANCE - BOYS BASKETBALL	0.00	0.00	260.00	0.00	0.00	0.00	260.00
21 729 000 6720 920	FUND BALANCE - FOOTBALL	0.00	799.00	0.00	0.00	0.00	0.00	(799.00)
21 729 000 6721 920	FUND BALANCE - FB DONNIE	541.95	0.00	0.00	0.00	0.00	0.00	541.95
21 729 000 6730 920	FUND BALANCE - BASEBALL	(62.00)	0.00	0.00	0.00	0.00	0.00	(62.00)
21 729 000 6731 920	BASEBALL FUNDRAISER	0.00	0.00	0.00	0.00	0.00	0.00	0.00
21 729 000 6740 920	FUND BALANCE - BOYS TRACK	0.00	0.00	0.00	0.00	0.00	0.00	0.00
21 729 000 6790 920	FUND BALANCE - WRESTLING	(1,662.23)	136.50	0.00	0.00	0.00	0.00	(1,798.73)
21 729 000 6791 920	FUND BALANCE - WREST FUNDRAISER	390.17	0.00	0.00	0.00	0.00	0.00	390.17
21 729 000 6810 920	FUND BALANCE - GIRLS BASKETBALL	0.00	0.00	260.00	0.00	0.00	0.00	260.00
21 729 000 6811 920	GIRLS BASKETBALL FUNDRAISER	94.17	0.00	0.00	0.00	0.00	0.00	94.17
21 729 000 6815 920	FUND BALANCE - VOLLEYBALL	0.00	276.49	2,258.00	0.00	0.00	0.00	1,981.51
21 729 000 6835 920	FUND BALANCE - SOFTBALL	406.00	170.00	308.40	0.00	0.00	0.00	544.40
21 729 000 6840 920	FUND BALANCE - GIRLS TRACK	0.00	90.00	0.00	0.00	0.00	0.00	(90.00)
21 729 000 7001 950	FUND BALANCE - ART CLUB	746.17	0.00	0.00	0.00	0.00	0.00	746.17
21 729 000 7002 950	FUND BALANCE - FFA	0.00	0.00	0.00	0.00	0.00	0.00	0.00
21 729 000 7003 950	FUND BALANCE - FCCLA	401.82	0.00	0.00	0.00	0.00	0.00	401.82
21 729 000 7004 950	FUND BALANCE - HONOR SOCIETY	921.79	0.00	0.00	0.00	0.00	0.00	921.79
21 729 000 7005 950	FUND BALANCE - LETTERMEN CLUB	0.00	0.00	0.00	0.00	0.00	0.00	0.00
21 729 000 7006 950	FUND BALANCE - STUD COUNCIL HS	2,276.49	0.00	0.00	0.00	0.00	0.00	2,276.49
21 729 000 7007 950	FUND BALANCE - STUD COUNCIL JH	2,787.73	0.00	0.00	0.00	0.00	0.00	2,787.73
21 729 000 7008 000	FUND BALANCE - ODYSSEY OF MIND	0.00	0.00	0.00	0.00	0.00	0.00	0.00
21 729 000 7009 000	FUND BALANCE - STU CONCESSION AC	0.00	0.00	0.00	0.00	0.00	0.00	0.00
21 729 000 7010 950	TROPHY CASE	0.00	0.00	0.00	0.00	0.00	0.00	0.00
21 729 000 7011 950	FUND BALANCE - BUSINESS CLUB	3,251.69	0.00	3,014.00	0.00	0.00	0.00	6,265.69
21 729 000 7012 950	ELEM ART CLUB	388.53	0.00	0.00	0.00	0.00	0.00	388.53
21 729 000 8000 000	FUND BALANCE CLASS OF 2015	2,042.34	0.00	0.00	0.00	0.00	0.00	2,042.34
21 729 000 8001 000	CHEERLEADING FUNDRAISER	1,416.00	0.00	205.80	0.00	0.00	0.00	1,621.80
21 729 000 8004 000	FUND BALANCE - BAND PROJECTS	260.21	0.00	0.00	0.00	0.00	0.00	260.21
21 729 000 8006 000	DO NOT USE!!	0.00	0.00	0.00	0.00	0.00	0.00	0.00
21 729 000 8007 000	CLASS OF 2010	0.00	0.00	0.00	0.00	0.00	0.00	0.00

Activity Balances

Activity Fund Balance Report - Summary - Include Encumbrances

08/2015 - 08/2015

Regular; Beginning Month 08/2015; Processing Month 08/2015; Fund Number 21

Fund: 21 STUDENT ACTIVITY FUND

Chart of Account Number	Chart of Account Description	Beginning Balance	Expenses	Revenues	Outstanding AP	Outstanding PO	Balance Change	Balance
21 729 000 8008 000	FUND BALANCE - BB CHEERLEADERS	263.85	0.00	0.00	0.00	0.00	0.00	263.85
21 729 000 8009 000	FUND BALANCE - SIDEWALK PROJECT	15,205.17	0.00	0.00	0.00	0.00	0.00	15,205.17
21 729 000 8010 000	FUND BALANCE - CLASS 2017	99.56	82.59	0.00	0.00	0.00	0.00	16.97
21 729 000 8011 000	DO NOT USE!!	0.00	0.00	0.00	0.00	0.00	0.00	0.00
21 729 000 8012 000	FUND BALANCE - CLASS 2014	1,406.28	0.00	0.00	0.00	0.00	0.00	1,406.28
21 729 000 8013 000	FUND BALANCE - CLASS 2013	0.00	0.00	0.00	0.00	0.00	0.00	0.00
21 729 000 8014 000	FUND BALANCE - FB CHEERLEADERS	299.37	0.00	0.00	0.00	0.00	0.00	299.37
21 729 000 8015 000	FUND BALANCE - WR CHEERLEADERS	(735.57)	0.00	0.00	0.00	0.00	0.00	(735.57)
21 729 000 8016 000	GENERAL ATHLETIC (&POP)	4,532.95	111.11	0.00	0.00	0.00	0.00	4,421.84
21 729 000 8017 000	FUND BALANCE - ELEM ACTIVITIES	0.00	0.00	0.00	0.00	0.00	0.00	0.00
21 729 000 8018 000	FUND BALANCE - INDUSTRIAL ARTS	0.00	0.00	0.00	0.00	0.00	0.00	0.00
21 729 000 8019 000	FUND BALANCE - INTEREST	1.89	0.00	1.85	0.00	0.00	0.00	3.74
21 729 000 8020 000	ELEMENTARY POP MACHINE	0.00	0.00	0.00	0.00	0.00	0.00	0.00
21 729 000 8021 000	FUND BALANCE - LIBRARY	0.00	0.00	0.00	0.00	0.00	0.00	0.00
21 729 000 8023 000	FUND BALANCE-P.E. FUNDRAISER	0.00	0.00	0.00	0.00	0.00	0.00	0.00
21 729 000 8025 000	FUND BALANCE - PLAYS	3,872.79	0.00	0.00	0.00	0.00	0.00	3,872.79
21 729 000 8028 000	CLASS OF 2016	4,490.17	0.00	0.00	0.00	0.00	0.00	4,490.17
21 729 000 8035 000	ATHLETIC SEASON	0.00	0.00	680.00	0.00	0.00	0.00	680.00
Fund Total: 21		45,733.07	1,715.69	6,988.05	0.00	0.00	0.00	51,005.43

Activity Fund Balance Report - Summary - Include Encumbrances

08/2015 - 08/2015

Regular; Beginning Month 08/2015; Processing Month 08/2015; Fund Number 21

Fund: 10 OPERATING FUND

Chart of Account Number	Chart of Account Description	Beginning Balance	Expenses	Revenues	Outstanding AP	Outstanding PO	Balance Change	Balance
10 721 000 3213 000	FUND BALANCE-PHASE III	0.00	0.00	0.00	0.00	0.00	0.00	0.00
10 721 000 8001 000	FUND BALANCE ADULT EDUCATION	0.00	0.00	0.00	0.00	0.00	0.00	0.00
10 721 000 8023 000	FUND BALANCE PE UNIFORM	0.00	0.00	0.00	0.00	0.00	0.00	0.00
10 721 000 8024 000	FUND BALANCE - PICTURES	0.00	0.00	0.00	0.00	0.00	0.00	0.00
10 721 000 8026 000	FUND BALANCE - POP	0.00	0.00	0.00	0.00	0.00	0.00	0.00
10 721 000 8027 000	FUND BALANCE - SCHOLARSHIP	0.00	0.00	0.00	0.00	0.00	0.00	0.00
10 729 000 3118 000	OTHER DESIGNATED FUND BALANCE	39,264.00	0.00	0.00	0.00	0.00	0.00	39,264.00
10 729 000 3204 000	TEACHER COMP	0.00	0.00	0.00	0.00	0.00	0.00	0.00
10 729 000 3206 000	TEACHER COMP - ADD DAY	0.00	0.00	0.00	0.00	0.00	0.00	0.00
10 729 000 3211 000	EDUC EXCELLENCE PHASE ONE	0.00	0.00	0.00	0.00	0.00	0.00	0.00
10 729 000 3212 000	PHASE II	0.00	0.00	0.00	0.00	0.00	0.00	0.00
10 729 000 3216 000	IA EARLY INTERVENTION	0.00	0.00	0.00	0.00	0.00	0.00	0.00
10 729 000 3342 000	EARLY LITERACY	3,071.74	0.00	0.00	0.00	0.00	0.00	3,071.74
10 729 000 3376 000	TEACHER COMP PROF DEVELOPMENT	2,078.08	0.00	0.00	0.00	0.00	0.00	2,078.08
10 729 000 3378 000	RESERVE FOR MARKET FACTOR	0.00	0.00	0.00	0.00	0.00	0.00	0.00
10 729 000 3387 000	TEACHER LEADERSHIP GRANT	6,213.91	44.90	0.00	0.00	0.00	0.00	6,169.01
10 729 000 4200 000	TITLE VI	0.00	0.00	0.00	0.00	0.00	0.00	0.00
10 729 000 4643 000	TITLE 11A FED TEACHER QUALITY	0.00	0.00	0.00	0.00	0.00	0.00	0.00
10 749 000 8017 000	ELEMENTARY ACTIVITIES	7,440.27	1,069.50	0.00	0.00	0.00	0.00	6,370.77
10 759 000 0000 000	UNRESERVED-FUND BALANCE	222,837.77	163,065.59	81,876.40	0.00	0.00	0.00	141,648.58
10 759 000 1920 000	FUND BALANCE ELEM DONATIONS	17,486.84	0.00	0.00	0.00	0.00	0.00	17,486.84
10 759 000 1922 000	FUND BALANCE - PE DONATIONS	130.00	0.00	0.00	0.00	0.00	0.00	130.00
10 759 000 8003 000	FUND BALANCE ANNUAL	6,099.69	0.00	0.00	0.00	0.00	0.00	6,099.69
10 759 000 8005 000	FUND BALANCE BAND RESALE	11,888.69	0.00	176.00	0.00	0.00	0.00	12,064.69
10 759 000 9001 000	UNRESERVED-FUND BALANCE MAXINE MYERS 5T	934.00	0.00	0.00	0.00	0.00	0.00	934.00
Fund Total: 10		317,444.99	164,179.99	82,052.40	0.00	0.00	0.00	235,317.40

Nutrition

MONTH OF August-2015

Monthly Financial Statement

Sidney Community Schools
Hot Lunch Fund

Beginning Cash Balance ----- \$1,895.74

INCOME

Student Lunches and Breakfasts	\$ 9,681.45
Adult Lunches and Breakfasts	\$56.95
Federal & State Reimbursement	\$0.00
Interest	\$0.05
Ala Carte - Milk	\$42.00
Ala Carte	\$87.60
Rebates	\$0.00
Other	\$0.00

TOTAL INCOME \$ 9,868.05

TOTAL AVAILABLE \$11,763.79

CASH EXPENDITURES

Food	\$0.00
Milk	\$0.00
Commodities	\$0.00
Soap & Consumable Supplies	\$0.00
Equipment and Repair	\$0.00
Salaries	\$6,450.77
Other	\$0.00

TOTAL EXPENDITURES \$6,450.77

End of Month Balance ----- \$5,313.02

BALANCE SHEET

August-2015

August-2014

August-2014

GENERAL FUND:

CASH ACCOUNT

BALANCE FIRST OF MONTH	21,497.15	
INTEREST	6.95	
RECEIPTS	451.00	
WITHDRAWALS OR TRANSFERS	390,000.00	
ACCTS PAYABLE	(88,219.16)	
PAYROLL	(294,686.80)	
AEA FLOWTHRU	0.00	
BALANCE END OF MONTH	29,049.14	50,201.45

ISJIT INVESTMENT	337.18	
INTEREST	0.07	
RECEIPTS	64,132.05	
WITHDRAWALS OR TRANSFERS	(337.18)	
BALANCE END OF MONTH	64,132.12	51,780.17

CASH BOX	50.00	50.00
-----------------	--------------	--------------

SAVINGS

BALANCE FIRST OF MONTH	559,772.25	
INTEREST	65.63	
RECEIPTS	205,614.03	
WITHDRAWALS OR TRANSFERS	(392,372.14)	
BALANCE END OF MONTH	373,079.77	415,048.82

TOTAL GENERAL FUND	466,311.03	517,080.44
---------------------------	-------------------	-------------------

LUNCH FUND:

CASH ACCOUNT

BALANCE FIRST OF MONTH	1,895.74
INTEREST	0.05
RECEIPTS	16,318.77
PAYROLL TO GENERAL FUND	(6,450.77)
ACCTS PAYABLE	(6,450.77)
BALANCE END OF THE MONTH	5,313.02

CASH ON HAND

	0.00
--	------

TOTAL LUNCH FUND	5,313.02	12,276.68
-------------------------	-----------------	------------------

ACTIVITY FUND:

CASH ACCOUNT

BALANCE FIRST OF MONTH	2,240.04
INTEREST	0.04
RECEIPTS	4,475.65
FROM CASH ON HAND	0.00
ACCTS PAYABLE	(1,715.69)
WITHDRAWALS OR TRANSFERS	0.00
	5,000.04

CASH ON HAND

	750.00
--	--------

		11,188.58
--	--	------------------

INVESTMENTS

BALANCE FIRST OF MONTH	42,668.03
INTEREST	1.81
RECEIPTS	7,061.20
FROM CASH ON HAND	0.00
WITHDRAWALS OR TRANSFERS	(4,475.65)
BALANCE END OF MONTH	45,255.39

TOTAL ACTIVITY FUND	51,005.43	34,714.90
----------------------------	------------------	------------------

SCHOOLHOUSE FUNDS

CASH ACCOUNT

	MANG-22	PEEL-36	LOSST-33	(DEBT SERVICE - 40) BONDS	QZAB
BALANCE FIRST OF MONTH	0.00	(326.00)	5,000.16	0.00	0.00
INTEREST	0.00	0.00	0.06	0.00	0.00
RECEIPTS	199.70	1,577.68	6,739.78	0.00	0.00
ACCTS PAYABLE	(199.70)	(1,251.68)	(6,739.94)	0.00	0.00
WITHDRAWALS OR TRANSFERS	0.00	0.00	0.00	0.00	0.00
	0.00	0.00	5,000.06	0.00	0.00

INVESTMENTS

BALANCE FIRST OF MONTH	87,389.64	27,000.22	305,359.92	(7,397.88)	0.00
INTEREST	14.01	4.09	51.58	0.00	0.00
RECEIPTS	234.54	125.39	23,225.98	631.74	0.00
BOND PAYMENTS/INTEREST	0.00	0.00	0.00	0.00	0.00
INTERFUND TRANSFERS(DEBT)	0.00	0.00	0.00	0.00	0.00
WITHDRAWALS OR TRANSFERS	(199.70)	(1,577.68)	(6,739.78)	0.00	0.00
BALANCE END OF MONTH	87,438.49	25,552.02	321,897.70	(6,766.14)	0.00

TOTAL SCHOOLHOUSE FUNDS	87,438.49	25,552.02	326,897.76	(6,766.14)	0.00
--------------------------------	------------------	------------------	-------------------	-------------------	-------------

August-2014	14,956.62	3,640.72	212,621.96	(6,817.70)	0.00
-------------	-----------	----------	------------	------------	------

GRAND TOTAL OF ALL FUNDS	955,751.61				
---------------------------------	-------------------	--	--	--	--

August-2014	788,473.62		433,122.13		
-------------	------------	--	------------	--	--

BALANCE SHEET

August-2015

August-2014

August-2014

GENERAL FUND:

CASH ACCOUNT

BALANCE FIRST OF MONTH	21,497.15	
INTEREST	6.95	
RECEIPTS	451.00	
WITHDRAWALS OR TRANSFERS	390,000.00	
ACCTS PAYABLE	(88,219.16)	
PAYROLL	(294,686.80)	
AEA FLOWTHRU	0.00	
BALANCE END OF MONTH	29,049.14	50,201.45

ISJIT INVESTMENT	337.18	
INTEREST	0.07	
RECEIPTS	64,132.05	
WITHDRAWALS OR TRANSFERS	(337.18)	
BALANCE END OF MONTH	64,132.12	51,780.17

CASH BOX	50.00	50.00
----------	-------	-------

SAVINGS

BALANCE FIRST OF MONTH	559,772.25	
INTEREST	65.63	
RECEIPTS	205,614.03	
WITHDRAWALS OR TRANSFERS	(392,372.14)	
BALANCE END OF MONTH	373,079.77	415,048.82

TOTAL GENERAL FUND	466,311.03	517,080.44
---------------------------	-------------------	-------------------

LUNCH FUND:

CASH ACCOUNT

BALANCE FIRST OF MONTH	1,895.74	
INTEREST	0.05	
RECEIPTS	16,318.77	
PAYROLL TO GENERAL FUND	(6,450.77)	
ACCTS PAYABLE	(6,450.77)	
BALANCE END OF THE MONTH	5,313.02	
<u>CASH ON HAND</u>	0.00	
TOTAL LUNCH FUND	5,313.02	12,276.68

ACTIVITY FUND:

CASH ACCOUNT

BALANCE FIRST OF MONTH	2,240.04	
INTEREST	0.04	
RECEIPTS	4,475.65	
FROM CASH ON HAND	0.00	
ACCTS PAYABLE	(1,715.69)	
WITHDRAWALS OR TRANSFERS	0.00	
BALANCE END OF MONTH	5,000.04	11,188.58
<u>CASH ON HAND</u>	750.00	750.00

INVESTMENTS

BALANCE FIRST OF MONTH	42,668.03	
INTEREST	1.81	
RECEIPTS	7,061.20	
FROM CASH ON HAND	0.00	
WITHDRAWALS OR TRANSFERS	(4,475.65)	
BALANCE END OF MONTH	45,255.39	22,776.32

TOTAL ACTIVITY FUND	51,005.43	34,714.90
----------------------------	------------------	------------------

SCHOOLHOUSE FUNDS

CASH ACCOUNT

	MANG-22	PEPEL-36	LOSST-33	(DEBT SERVICE - 40) BONDS	QZAB
BALANCE FIRST OF MONTH	0.00	(326.00)	5,000.16	0.00	0.00
INTEREST	0.00	0.00	0.06	0.00	0.00
RECEIPTS	199.70	1,577.68	6,739.78	0.00	0.00
ACCTS PAYABLE	(199.70)	(1,251.68)	(6,739.94)	0.00	0.00
WITHDRAWALS OR TRANSFERS	0.00	0.00	0.00	0.00	0.00
	0.00	0.00	5,000.06	0.00	0.00

INVESTMENTS

BALANCE FIRST OF MONTH	87,389.64	27,000.22	305,359.92	(7,397.88)	0.00
INTEREST	14.01	4.09	51.58	0.00	0.00
RECEIPTS	234.54	125.39	23,225.98	631.74	0.00
BOND PAYMENTS/INTEREST	0.00	0.00	0.00	0.00	0.00
INTERFUND TRANSFERS(DEBT)	0.00	0.00	0.00	0.00	0.00
WITHDRAWALS OR TRANSFERS	(199.70)	(1,577.68)	(6,739.78)	0.00	0.00
BALANCE END OF MONTH	87,438.49	25,552.02	321,897.70	(6,766.14)	0.00

TOTAL SCHOOLHOUSE FUNDS	87,438.49	25,552.02	326,897.76	(6,766.14)	0.00
--------------------------------	------------------	------------------	-------------------	-------------------	-------------

August-2014	14,956.62	3,640.72	212,621.96	(6,817.70)	0.00
-------------	-----------	----------	------------	------------	------

GRAND TOTAL OF ALL FUNDS	955,751.61				
---------------------------------	-------------------	--	--	--	--

August-2014	788,473.62		433,122.13		
-------------	------------	--	------------	--	--